

MAXIMUS-3



JKU WRANGLER 4-DOOR

JK 4-DOOR ROOF RACK SYSTEM

(with Rhino-Rack Pioneer Platform)

PART #: JK3000RB, JK3001RR, JK3002RR

INSTALLATION GUIDES

Estimated Install Time: 5 Hours

THIS PRODUCT IS NOT COMPATIBLE WITH JK 2-DOOR.
THIS PRODUCT IS NOT COMPATIBLE WITH SOFT TOP ROOF.

PLEASE MAKE SURE YOU READ AND UNDERSTAND THE ENTIRE INSTALLATION GUIDE BEFORE YOU START.
WE EXPECT YOU TO HAVE BASIC MECHANICAL ABILITIES TO PERFORM THIS INSTALLATION.

WE RECOMMEND THAT YOU SEPARATE AND IDENTIFY ALL THE PARTS AND HARDWARE KITS YOU
RECEIVED WITH YOUR SHIPMENT BEFORE YOU PROCEED.



IMPORTANT

Follow these instructions precisely. Maximus-3 is not liable for any damage caused by improperly installed products. It is the purchaser's responsibility to ensure both the installation and maintenance are performed properly as set forth in this guide. We recommend using anti-size paste on all non-thread lock bolts.

Parts List

Qty

Tools Required

Maximus-3 Roof Rack Legs	4
Front Inner Bracket Assembly RHS	1
Front Inner Bracket Assembly LHS	1
Rear Inner Bracket Assembly RHS	1
Rear Inner Bracket Assembly LHS	1
Maximus-3 Satellite Antenna Bracket	1
Option: Rhino Rack Pioneer Platform Kit	1
Option: Maximus-3 Side Ladder Kit	1-2

Metric Drive Sockets and Extensions
Metric wrenches/spanners
Metric Measuring Tape
Driller and Drill Bits
Metric Allen Key # 5
Masking or Painter's Tape

Maximus-3 Hardware List

Qty

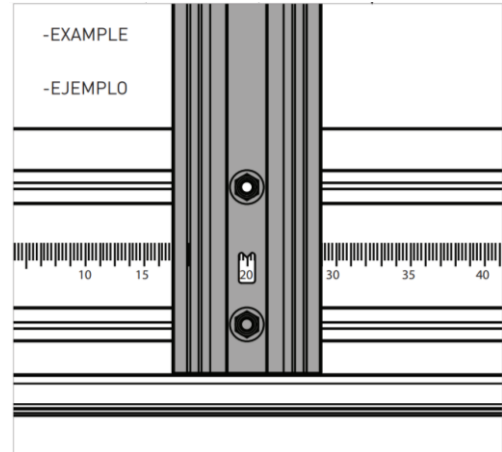
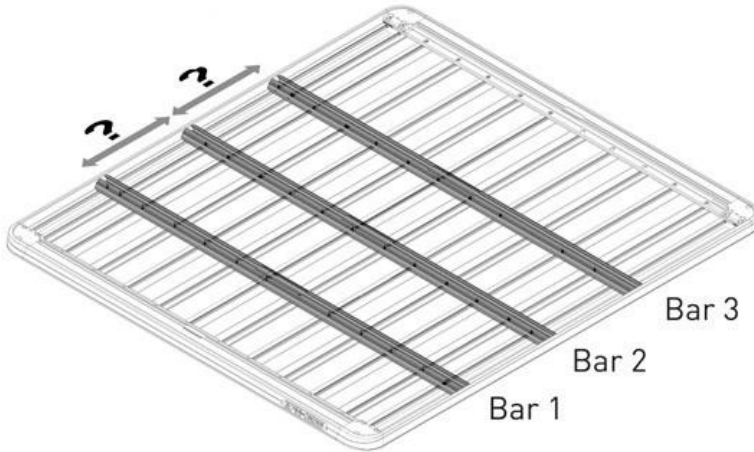
Legs to Cross Bars:	
M10 x 25 Flanged Hex Bolts – Zinc	4
M10 Nut Plates (Channel nuts) – Zinc	4
Legs to Hardtop:	
M8 x 30 Sealing Bolts – Black Stainless	8
M8 Flange Lock Nuts – Stainless Steel	8
Rubber Isolator Gaskets/Washers	8
Internal Front Brackets to Sport Bar:	
M8 x 18 Shim Washers – Zinc	4



INSTALLATION STEPS

A- ASSEMBLE THE PIONEER PLATFORM

1. Assemble the Pioneer Platform using Hardware and Instructions provided with Rhino Rack platform kit. (Step 1-12)
2. Lay the assembled Pioneer Platform upside down on a protective surface to avoid surface damage.
3. Attach platform crossbars according to IMPORTANT mounting locations as shown below.



FOR 60" PLATFORM

Crossbar #1 attaches in mounting location 35.5 CM (335 MM) mark on the numbered ruler scale on both sides.
Crossbar #3 attaches in mounting location 57.8 CM (578 MM) mark on the numbered ruler scale on both sides.
Crossbars #2 and #4 attach evenly in the space between and in front of crossbar #1 and crossbar #3 as desired.

FOR 76" PLATFORM

Crossbar #1 attaches in mounting location 53.5 CM (535 MM) mark on the numbered ruler scale on both sides
Crossbar #3 attaches in mounting location 37.8 CM (378 MM) mark on the numbered ruler scale on both sides
Crossbars #2, #4 and #5 attach evenly in the space between and in front of crossbar #1 and #3 as desired.

B- INSTALL MAXIMUS-3 ROOF RACK LEGS TO PLATFORM CROSSBARS

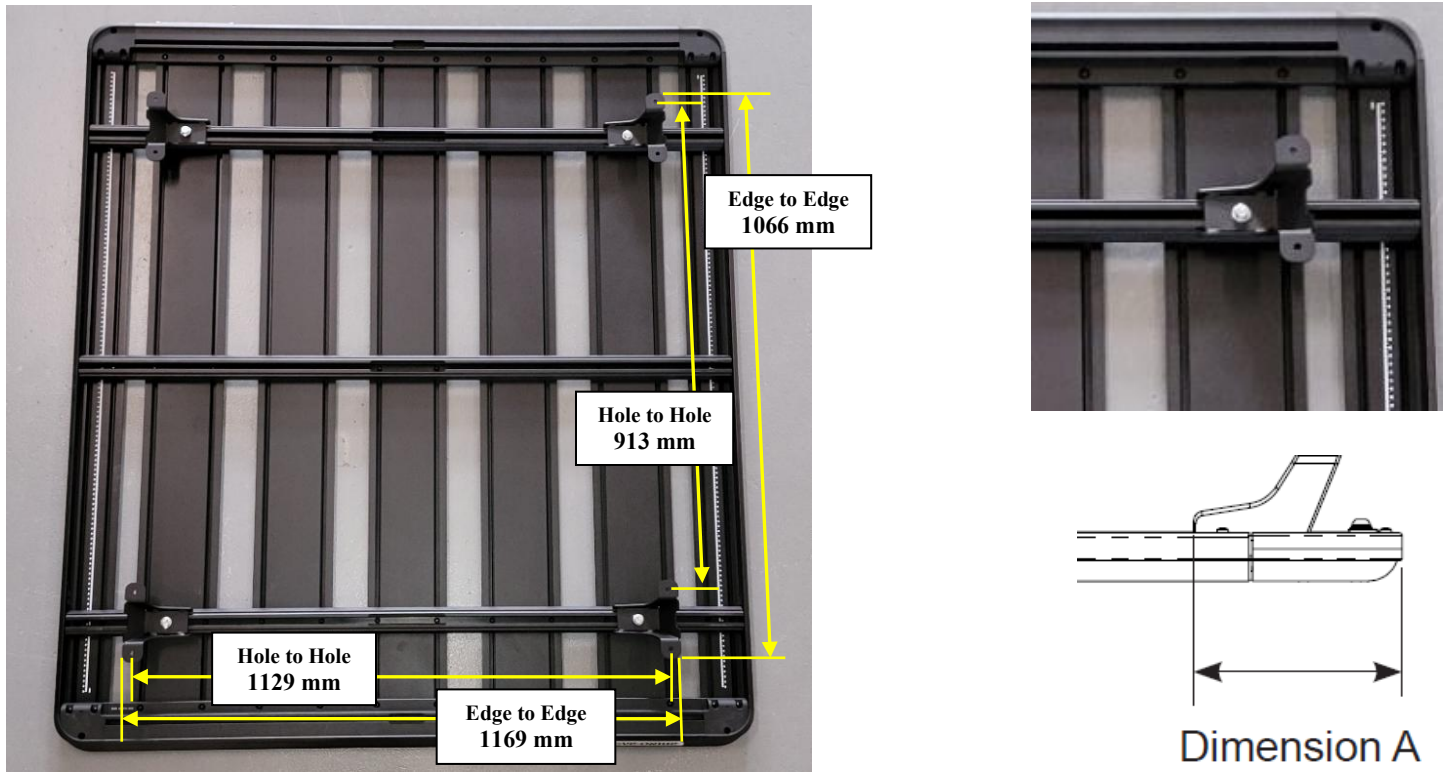
1. Loosely attach Maximus-3 Roof Rack Legs to crossbar #1 and crossbar #3 using the M10 Hex Bolts and Channel Nuts provided - leave loose enough to adjust in the next steps.
 - Two Legs on Crossbar #1 (REAR of platform)
 - Two Legs on Crossbar #3 (FRONT of platform)



2. Measure and Adjust the Legs according to IMPORTANT final dimensions below.
 - Distance between Front Leg and Rear Leg = 913 mm measured from center to center of leg bolt holes, shown below.
 - Distance between Left Leg and Right Leg = 1129 mm measured from center to center of leg bolt holes, shown below.

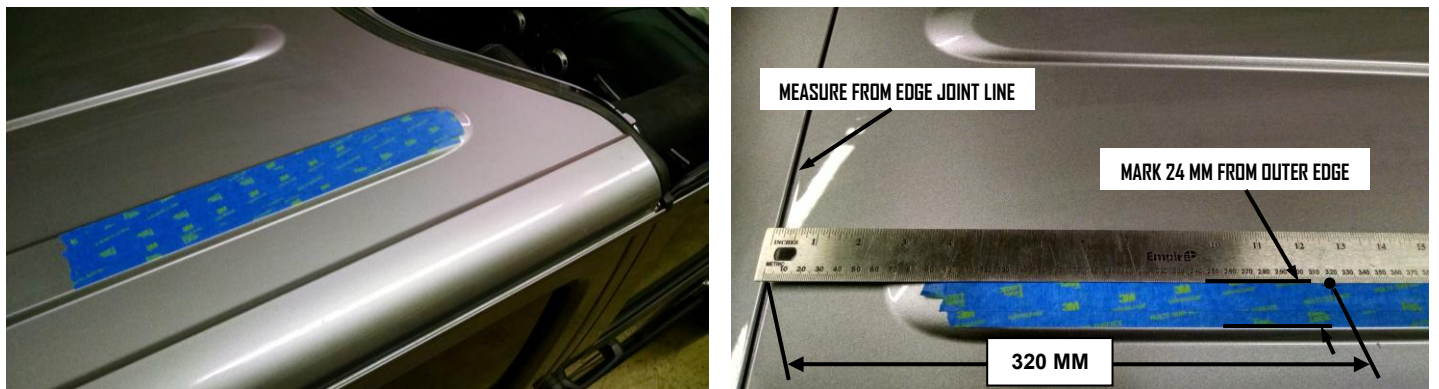
IMPORTANT:

- ✓ Left Legs to Right Legs must be symmetrically centered on the platform to the nearest 1/16 Inch (1.6mm). Dimension A Left = Dimension A Right.
- ✓ All four legs must be squarely placed on the platform – take diagonal “X” measurements to confirm squareness to nearest 1/8 Inch (3mm).
- ✓ **Double check your measurements and tighten down all 4 legs. Torque to 22 ft.lb**



C- MARK AND DRILL HARDTOP MOUNTING HOLES

1. Carefully remove the Freedom Tops and place on a protective surface.
2. Fold the side Rear View Mirrors on both LHS and RHS doors.
3. Cover the mounting surfaces on the Hardtop with masking tape for marking and protecting the surfaces during fitment.
4. Measuring from Hardtop back panel joint line, mark the rear holes at 320 MM from the joint edge as shown below and 24 MM from outer edge of surface.



5. With help from a second person, lift the Platform over the Jeep and carefully place on the Hardtop – slots to the rear.
6. Carefully align the holes of back Platform Legs with the back drill points you marked in step (4) above. Make sure all 4 legs line up well on the raised mounting surface as shown below. The holes should be 24 MM (1”) from the outer edge of raised surface – refer to pictures below.
7. Check your measurements twice before you mark your final drill points.

8. Using a pen/pencil, mark drill points on the Hardtop.
9. Carefully lift and remove the Platform assembly and place on a protective surface.



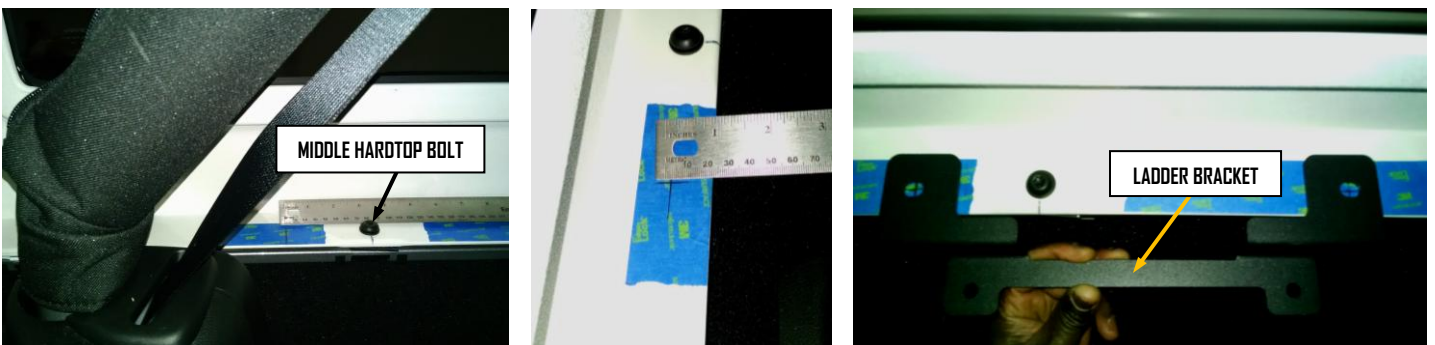
10. With the Platform removed mark precise center points of the drill marks – there 8 drill points.
11. Drill pilot holes with a small drill bit and then drill 9 MM (3/8”) final mounting holes – do not drill deep to avoid damaging
12. Remove masking tape from the mounting surface and clean the surface for final install.



D- DRILL SIDE LADDER MOUNT BRACKET HOLES (OPTIONAL)

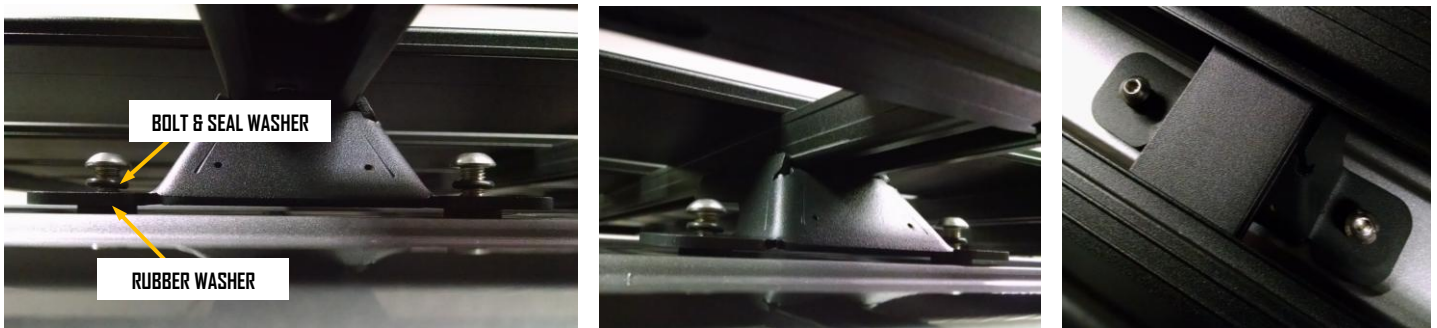
*Note: The Side Ladder can be installed on either sides of the vehicle – Driver side or Passenger side.
IF YOU ARE NOT INSTALLING SIDE LADDER(S) PLEASE SKIP TO STEP (E).*

1. Mark the back mounting hole at 80 MM from the middle Hardtop mounting bolt and 32 MM from the Hardtop wall.
 - You can also measure 20 MM from the Hardtop edge.
2. Mark the front hole 274 MM from the back hole you just marked. Use the Ladder Bracket to check/verify your marking.
3. Drill pilot holes through the Hardtop and body sheet metal using a small drill bit then drill final holes with a 9 MM (3/8”) drill bit.
4. Clean drilling debris and dust with a vacuum cleaner.



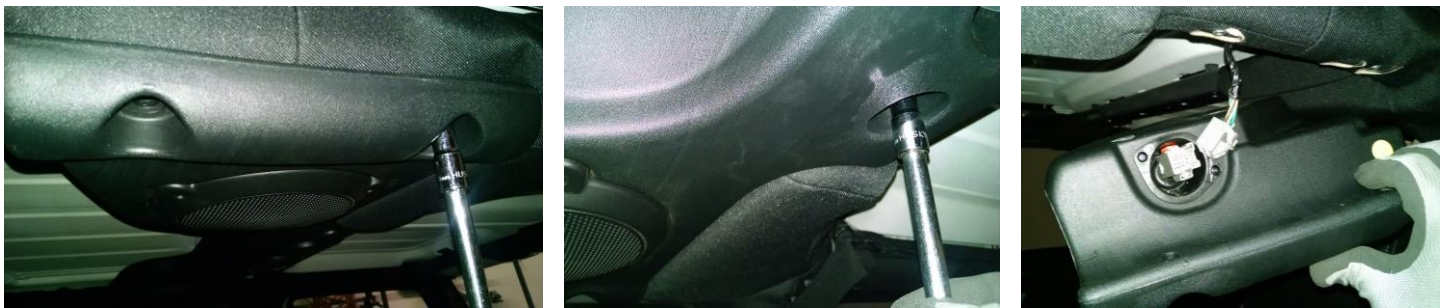
E- MOUNT THE PLATFORM ASSEMBLY ONTO THE HARDTOP

1. With help from a second person, lift the Platform assembly and carefully place on the Hardtop.
2. Align the holes and insert mounting Stainless-Steel Bolts with Seal Washers and Isolator Rubber Washers through the Hardtop as shown.



F- INSTALL MAXIMUS-3 INTERNAL BRACKETS & SIDE LADDER BRACKETS

1. Unbolt the Hardtop – there are 2 bolts in the front and 6 bolts in the back.
2. Unbolt the overhead Sound Bar, disconnect the interior light wiring connector and remove the Sound Bar.



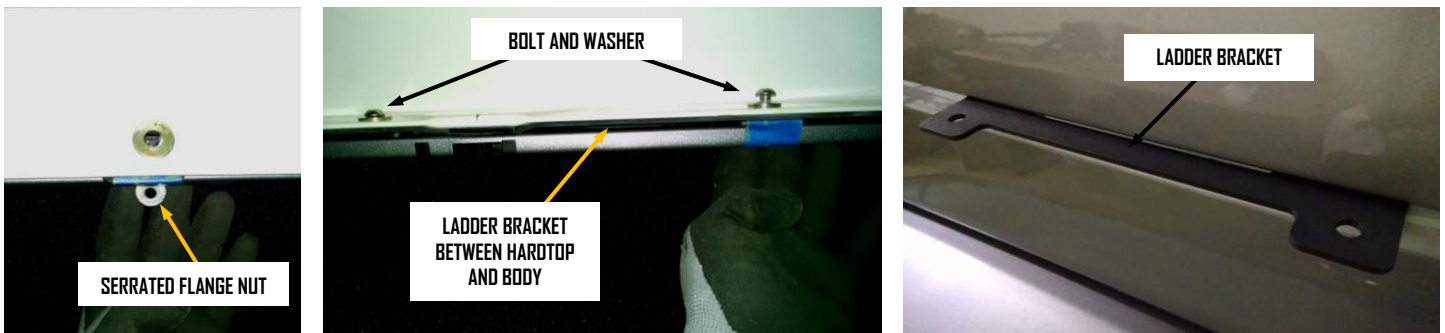
3. Disconnect the back windshield wiper wire harness and drain hose in the back.
4. With help from a second person lift the front of the Hardtop and place padded wooden spacers between as shown. This will give you more room to be able to install the front brackets.



5. Unzip the roll bar padding to reveal factory brace brackets. Remove the bolts shown below and keep for install later.
6. On the roll cage front passenger side brace/gusset, remove the Satellite Antenna shown, disconnect wiring and save for relocation later.
7. Disassemble the Internal Brackets (Bearing Brackets) to prepare for assembly. Please note orientation of assembly.
8. Place the front lower Bearing Brackets over roll cage brace gussets and align the holes, then ark bracket tabs position on the padding and cut clearance slits through the padding with a knife. Repeat on the other side. See pictures below.
9. Now insert the brackets through the slits you cut in the pads, add the shim washers underneath the brackets and bolt to the roll cage gusset with factory bolts.
10. Repeat on the other side and tighten all bolts.



11. Insert the Ladder Mount Bracket between the Hardtop and the body. Align the holes and use tape to hold in position. Make sure the holes line up – make corrections to the holes as necessary.
12. Remove the wooden spacers you put in in step (4) and carefully lower the Hardtop to its aligned position.
13. Re-install the Hardtop bolts – 2 bolts in the front and 6 bolts in the back.
14. Bolt the Ladder Bracket to the body as shown using the bolts, washers and flanged nuts supplied.



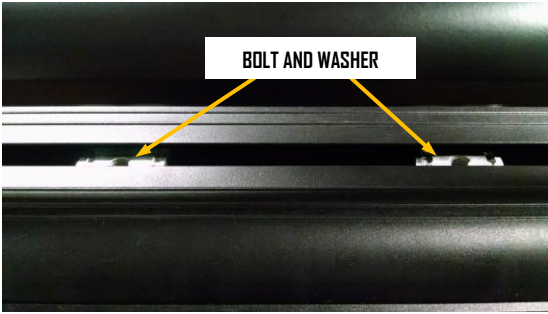
15. Align the Upper Internal Brackets to platform legs bolts from inside the Hardtop and loosely secure with Flanged lock-nuts – use a helping hand to hold the Stainless-Steel bolts from outside with an Allen key while you fasten the nuts. Adjust/align to the lower brackets and tighten horizontal bolts.
16. Place the lower Back Internal Brackets over the roll cage brace gusset, cut slits in padding and install the Brackets as shown. Note: horizontal bracket bolts are to be tightened last using the Allen key.



17. Check and tighten all bolts and zip the Roll Cage paddings.

G- OPTIONAL: INSTALL THE SIDE LADDER

1. Insert two M8 Channel Nuts in the side bar through the square cutouts in the platform. Refer to pictures bellow.
2. Place the Ladder over the side bar, align Channel Nuts and loosely secure with M8 Stainless Steel Bolts and Washers.
3. Align the bottom of the ladder to the holes on the Ladder Bracket you installed in step (F) and loosely secure with M8 Stainless Steel Bolts and Washers.

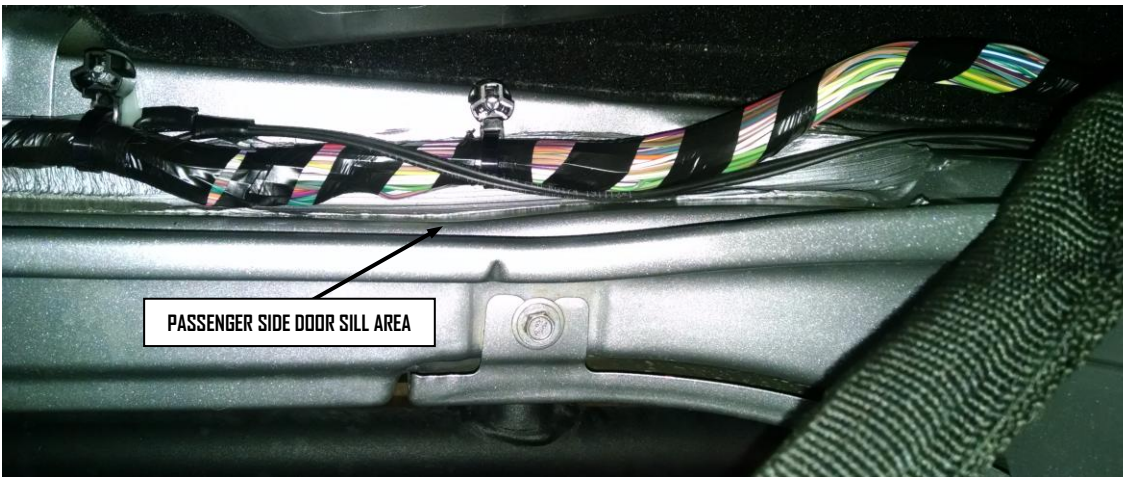


4. Check that the Ladder seats well on the Platform side bar and tighten the bolts.
5. Align the bottom brackets and tighten using an Allen Key and a 13 MM ratchet – push on the ladder back leg to align.



H- RELOCATE THE SATELITE RADIO ANTENNA

1. Carefully remove plastic trim from passenger side (RHS) B-pillar, floor and A-pillar.
2. Follow the factory antenna wiring, detach from B-pillar and re-route up to the windshield frame area – loop and tape together any excess wire under the door sill.
3. Connect the antenna wire and reattach factory plastic trim panels.



4. Unzip passenger side front roll bar padding and mark antenna connector recess on the foam padding as shown.
5. Using a small pocket knife cut out a recess as shown below.
6. Place antenna in the recess and zip the padding to secure.



Your installation is complete. If you have questions regarding this installation, please contact us at customerservice@maximus-3.com, or call 248-6061745



WARNING



Limited Warranty

We offer Limited Warranty on products engineered and manufactured by *MAXIMUS-3*.

Our **Warranty** covers all workmanship, material and paint/finish defects for a period of 1 year (12 months) from the time of initial

All Maximus-3 aftermarket products and components must be installed as the manufacturer instructs. Maximus-3, LLC will not be responsible for any modification, improper installation, alteration, tampering, neglect, abuse or misuse of our products. Only use Maximus-3 installation guide to add, alter, or fabricate factory parts to incorporate Maximus-3 products. We will be happy to answer any questions concerning the design, function, and correct use of our products by calling 248-821-6654. It is ultimately the user's responsibility to have all fasteners properly retorqued after the first 100 miles and then every 3,000 miles thereafter. Tire carrier must be inspected for looseness every 1,000 miles. Using your vehicle off-road will put extreme stress on the vehicle and components. After driving off-road, always check for damage and wear to components, accessories, and equipment. Completely inspect your vehicle including wheels, tires, tire carrier, roof rack, and front set up. Check all threaded fasteners for looseness. Re-torque if necessary to the required specifications. Check and remove any accumulated dirt, mud rock, or debris to preserve powder coat finish/rust prevention.

purchase. *MAXIMUS-3* provides detailed installation instructions for every product. It is the responsibility of the purchaser / installer to ensure these instructions are followed properly. *MAXIMUS-3* will not be responsible for damages caused by misuse, altered or improperly installed products. *MAXIMUS-3* will not cover paint or labor costs for damaged items. Warranty is not transferable and covers all items ordered on or after December 1, 2012 with a valid original receipt.

Warranty covers all components manufactured by *MAXIMUS-3* unless otherwise specified on individual product listings.

3 Year Manufacturer Warranty

Maximus-3 products are warranted to be free from structural defects. All metallic components will carry 3-year manufacturer structural warranty. All warranty claims shall be issued in replacement of the original part or in-store credit. No refunds will be issued in cash, check or credit card payments.

ANY PACKAGES BEING SENT/RETURNED TO MAXIMUS-3 WITHOUT RETURN MERCHANDISE AUTHORIZATION (RMA) NUMBERS WILL BE REFUSED AND RETURNED TO SENDER.

RETURN POLICY

(Procedures for Returning or Exchanging Product)

PRODUCT MUST BE RETURNED TO THE ORIGINAL PLACE OF PURCHASE – Please refer to your original invoice.

Returns and Exchanges

At *MAXIMUS-3* we strive to get your order to you complete, undamaged and 100% correct. Your satisfaction is guaranteed. Products can be returned within 15 days of shipment as long as they are unused, uninstalled, unpainted and in new and saleable condition. Returned products need to be in their original packaging with all parts and instructions included. All returns of non-defective, non-damaged or special-order parts are subject to a 15% restocking fee, unless we made an error.

All returns require a "Return Merchandise Authorization" (RMA) number from *MAXIMUS-3* or one of our Distributors.

Whether we have made an error, you wish to exchange something, or there is a warranty claim, an RMA number is required. This number must be written on the outside of the returned package. Please allow five (5) business days for refunds to appear on your credit card statement. **No returns will be accepted on modified, "Custom" or "Special Order" items.** Item(s) must be received within 30 days of the RMA issue date; otherwise the Return Merchandise Authorization will be voided.

Damaged Merchandise

Upon receiving your order, open the carton(s) and thoroughly inspect the contents. If any package arrives and shows signs of external damage, you may choose not to accept it. You may refuse it and require your seller to advise you of their procedure to follow. If there was damage during shipment, contact us so that a claim can be filed. Please keep all packaging materials should the carrier wish to inspect them.

Truck Freight Shipments

It is imperative to make a note of any damage on the delivery receipt at the time of delivery. **Open and inspect** the merchandise carefully **before** signing the delivery receipt. We can only initiate claims if the damage was noted at the time of delivery. Freight costs are all based on shipments to commercial addresses (with a dock), if you require shipment to a residential address, additional charges may be applied to the order total.

Products

Product specifications, availability and pricing are all subject to change without notice. National, State, Provincial or local laws and regulations may prohibit the removal or modification of stock vehicle components, or the addition of some of our products for on road use. It is the responsibility of the purchaser to ensure that the use of purchase products follows all laws and regulations.