

# MAXIMUS-3



JL WRANGLER/JT GLADIATOR

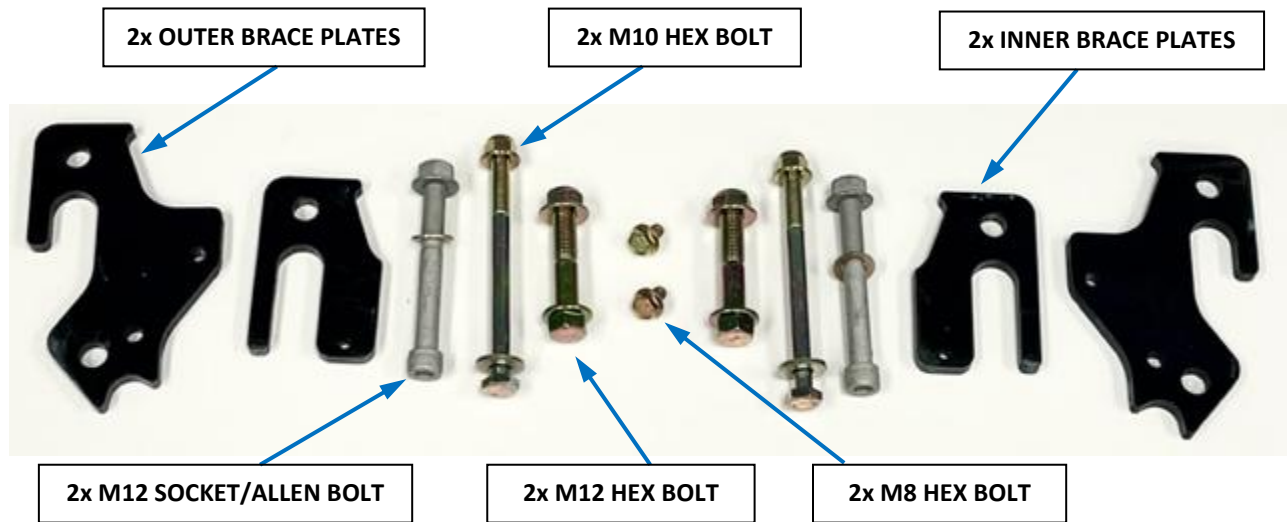
## RECOVERY/TOW LOOPS FRAME TIE-IN BRACE PLATES

PART #: JL1025BP

### INSTALLATION GUIDES

PLEASE MAKE SURE YOU READ AND UNDERSTAND THE ENTIRE INSTALLATION GUIDE BEFORE YOU START. WE EXPECT YOU TO HAVE BASIC MECHANICAL ABILITIES TO PERFORM THIS INSTALLATION.

WE RECOMMEND THAT YOU SEPARATE AND IDENTIFY ALL THE PARTS AND HARDWARE KITS YOU RECEIVED WITH YOUR SHIPMENT BEFORE YOU PROCEED TO DISASSEMBLE YOUR BUMPER.



## IMPORTANT

Follow these instructions precisely. Maximus-3 is not liable for any damage caused by improperly installed products. It is the purchaser's responsibility to ensure both the installation and maintenance are performed properly as set forth in this guide. We recommend using anti-seize paste on all non-thread lock bolts.

### Component List:

Outer Brace Plate  
Inner Brace Plate

### Quantity

2  
2

### Tools Required:

- Electric Drill
- 1/2 Drill Bit
- 7/16 Drill Bit (or pliers/chisel)
- Metric Socket Wrenches

### Hardware Kits:

M8 x 1.25 x 12 mm Bolt  
M10 x 1.5 x 130 mm Bolt  
M10 x 1.5 Flanged Locknut  
M10 x 24 mm Flat Washer  
M12 x 1.75 x 100 mm Allen/Socket Bolt  
M12 x 1.75 Flanged hex Nut  
M12 x 22 mm Flat Washer  
M12 x 1.75 x 60 mm Hex Bolt  
M12 x 24 mm Flat Washer

### Quantity

2  
2  
2  
2  
2  
4  
2  
2  
2

## **INSTALLATION STEPS**

Estimated Install Time: 1 hour

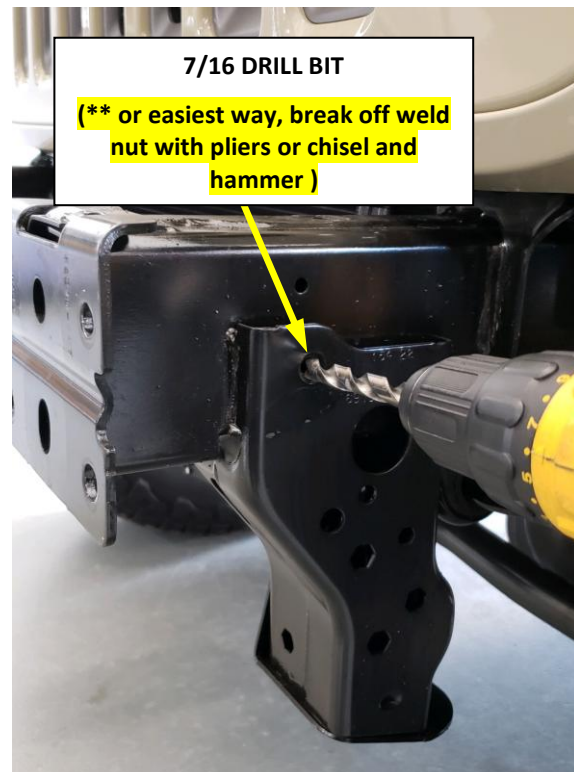
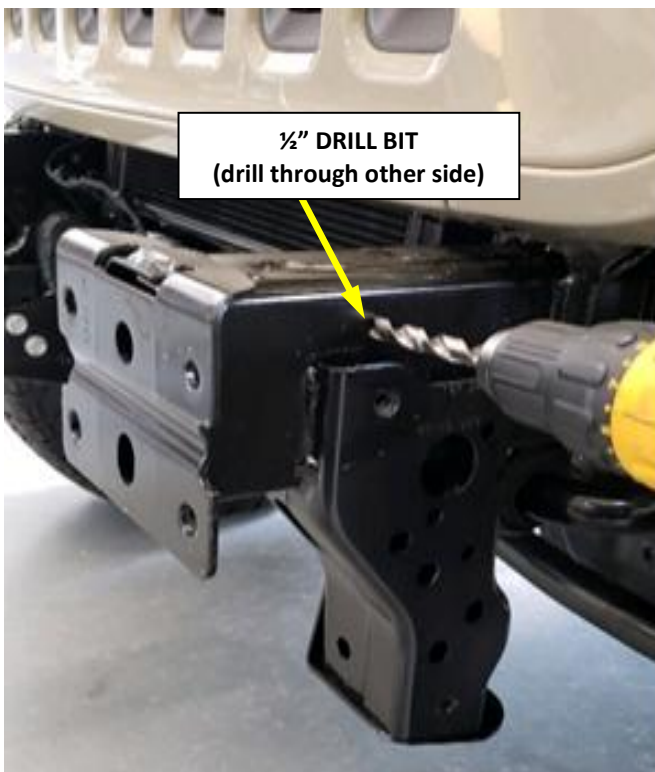
### **1. DRILL OUT THE SMALL FACTORY HOLES TO 1/2" HOLES**

Using a 1/2" drill bit drill out existing factory holes through the other side of box frame, as shown below.

### **2. DRILL OUT THE FACTORY THREADED HOLE TO 7/16" HOLES**

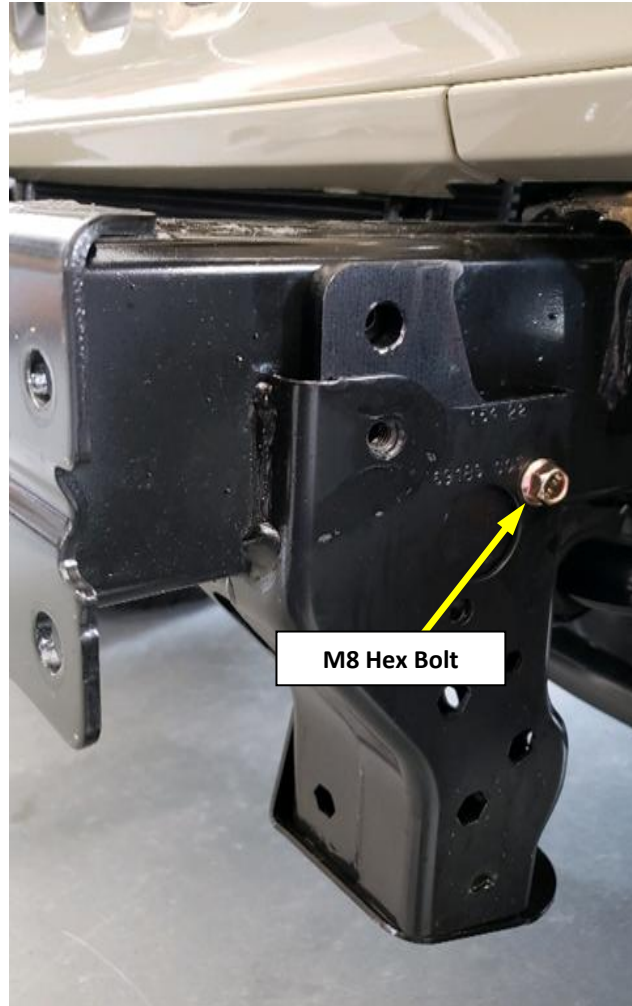
Using 7/16" drill bit, drill out factory outside and inside threaded holes, as shown below. Drill through the other side of the frame.

**EASIEST METHOD:** Break off the factory threaded weld nuts using a pair of lock pliers, or by knocking out the nuts using a chisel or center punch and a hammer. They should come off easily.



### 3. SLIDE OUTER PLATE INTO OUTER SUBFRAME POCKET

Slide the outer brace plate into frame pocket as shown below. Use a wooden/soft hammer to tap it in if the fit is tight. Align the holes and thread in the M8 hex bolts and tighten to keep the alignment, as shown below.

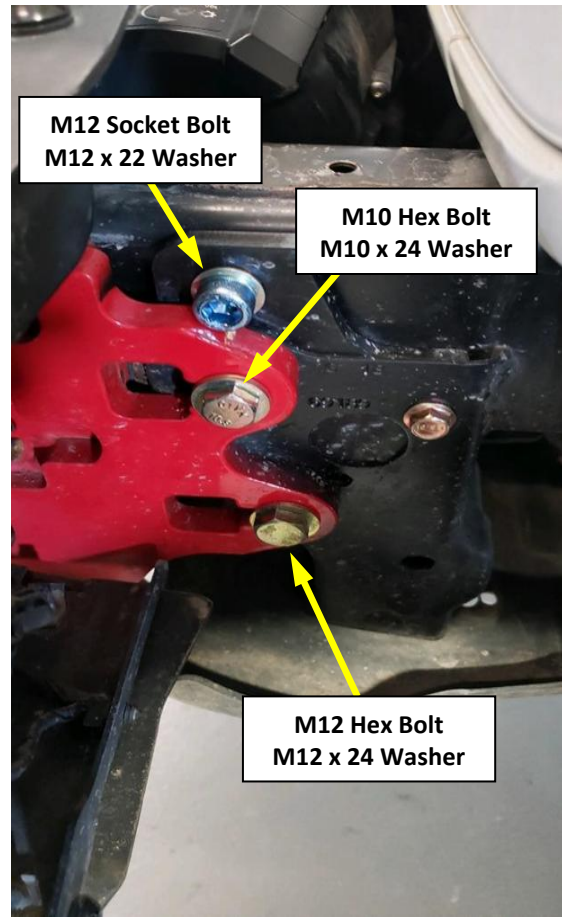


### 4. SLIDE THE INNER PLATE INTO THE INNER SUBFRAME POCKET

Slide the inner brace plate into the inner subframe pocket as shown below. Use a wooden/soft hammer to tap it in if the fit is tight, and align the top holes. Refer to the picture shown below and note the orientation.

### 5. BOLT YOUR MAXIMUS-3 RECOVERY/TOW LOOPS TO THE FRAME (Refer to Tow Loops Instructions)

- A. Using the M12 Allen/Socket Bolt, Washer and Lock Nut supplied, bolt outer and inner plates to the frame through the hole you drilled in step 1. Refer to the picture below.
- B. Remove the factory grey M10 hex bolt holding the frame horn bracket from the frame on the inner side.
- C. Using the M10 Hex Bolt, Washer and Lock Nut supplied, attach your Maximus-3 Tow Loop top bolt through the hole you drilled in step 2 and through the threaded weld nut on the inner sub-frame on other side. Place the lock nut on the other side of the frame on top of the factory frame horn bracket (inner side).
- D. Using M12 Hex Bolt, Washer and Serrated Flange Nut supplied, attach the lower bolt through the lower factory hole.
  - Insert the serrated flange nut inside the subframe pocket through oval cutout/hole in the front.



**6. REPEAT THE SAME ON THE OTHER SIDE.**

**7. TORQUE ALL THE BOLTS TO SPEC:**

- M8 Hex Bolt = 20 Lb.ft
- M10 Hex Bolt = 32 Lb.ft
- M12 Socket Bolt = 35 - 40 Lb.ft >>> tighten by hand, stop if the box frame starts to compress or collapse.
- M12 Hex Bolt = 95 Lb.ft

Your installation is complete. If you have questions regarding this installation, please contact us at [sales@maximus-3.com](mailto:sales@maximus-3.com) or call 248-821-6654.