

MAXIMUS-3



JKU WRANGLER 4-DOOR

JKU HEAVY DUTY CROSSBARS & MOUNTING SYSTEM

(With Rhino-Rack Heavy Duty Crossbars)

PART #: JK3000HC, JK3000RB

INSTALLATION GUIDES

THIS PRODUCT IS NOT COMPATIBLE WITH JK 2-DOOR.
THIS PRODUCT IS NOT COMPATIBLE WITH SOFT TOP ROOF.

PLEASE MAKE SURE YOU READ AND UNDERSTAND THE ENTIRE INSTALLATION GUIDE BEFORE YOU START.
WE EXPECT YOU TO HAVE BASIC MECHANICAL ABILITIES TO PERFORM THIS INSTALLATION.

WE RECOMMEND THAT YOU SEPARATE AND IDENTIFY ALL THE PARTS AND HARDWARE KITS YOU
RECEIVED WITH YOUR SHIPMENT BEFORE YOU PROCEED.



IMPORTANT

Follow these instructions precisely. Maximus-3 is not liable for any damage caused by improperly installed products. It is the purchaser's responsibility to ensure both the installation and maintenance are performed properly as set forth in this guide. We recommend using anti-size paste on all non-thread lock bolts.

INSTALLATION STEPS

Estimated Install Time: 4 Hours

A- INSTALL CROSSBAR LEGS TO RHINO RACK CROSSBARS

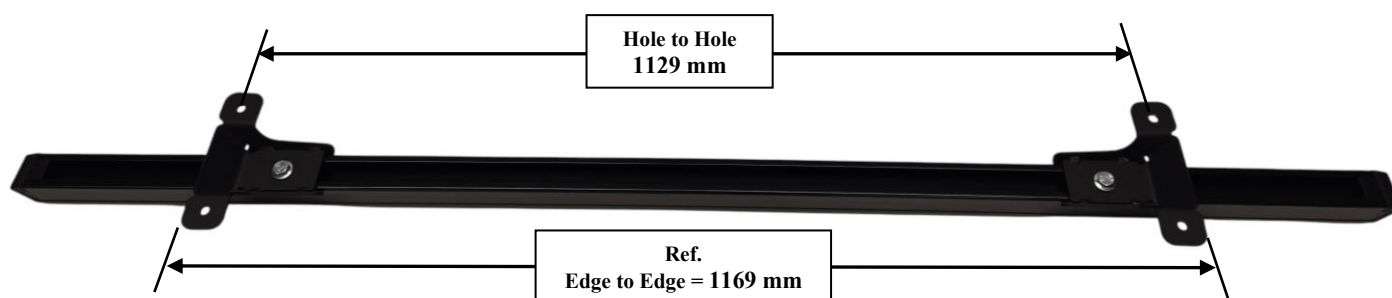
1. Loosely attach Maximus-3 Crossbar Legs to Rhino Rack crossbars using the M10 Hex Bolts and Channel Nuts provided - leave loose enough to adjust in the next steps.
 - Two Legs on each Crossbar as shown below.



- Measure and Adjust the **Distance between Left Leg and Right Leg to 1129 mm** measured from center to center of leg bolt holes, as shown below

IMPORTANT:

- ✓ Left Legs to Right Legs must be symmetrically centered on the crossbars to the nearest 1/16 Inch (1.6mm).
- ✓ **Double check your measurements and tighten down all 4 legs. Torque to 22 ft.lb**



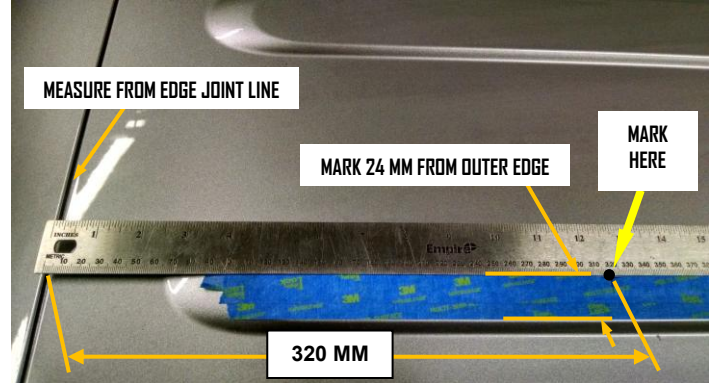
2. Measure and Adjust the Legs according to **IMPORTANT** final dimensions below.
 - Distance between Front Leg and Rear Leg = **913 mm** measured from center to center of leg bolt holes, shown below.
 - Distance between Left Leg and Right Leg = **1129 mm** measured from center to center of leg bolt holes, shown below.

IMPORTANT:

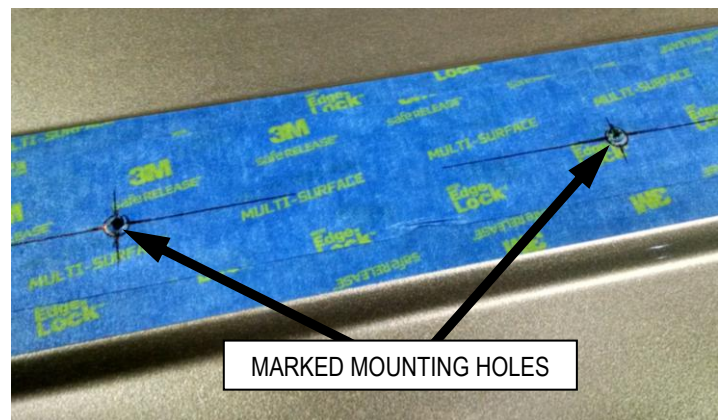
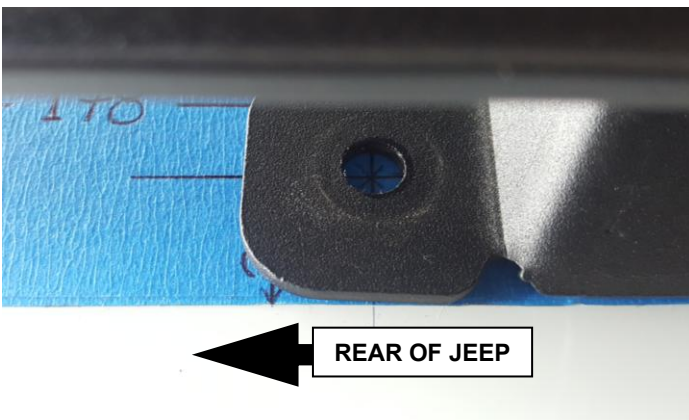
- ✓ Left Legs to Right Legs must be symmetrically centered on the platform to the nearest 1/16 Inch (1.6mm).
Dimension A Left = Dimension A Right.
- ✓ All four legs must be squarely placed on the platform – take diagonal “X” measurements to confirm squareness to nearest 1/8 Inch (3mm).
- ✓ **Double check your measurements and tighten down all 4 legs. Torque to 22 ft.lb**

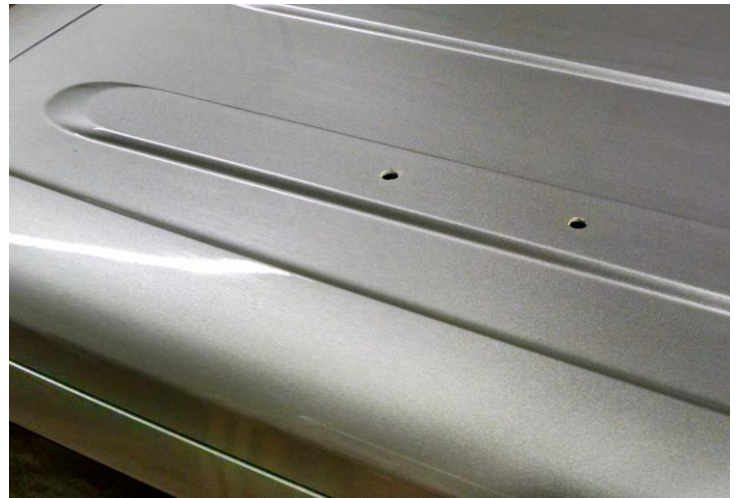
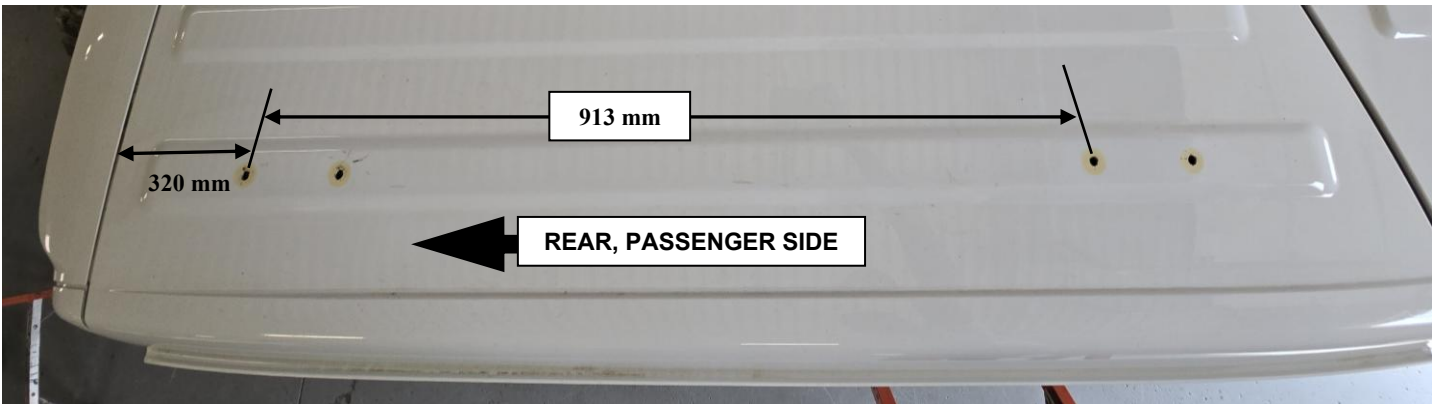
B- MARK AND DRILL MOUNTING HOLES IN THE HARDTOP

1. Carefully remove the Freedom Tops and place them on a protective surface.
2. Apply masking tape to the four corners of the hardtop, on outer raised surfaces as shown below. This will help when marking drill points and will also protect the hardtop surface during fitment.
3. **Mark placement location for the rear crossbar:**
Mark the crossbar leg rear-most drill location at **320 mm** from the hardtop joint edge and **24 mm** from outer raised edge as shown below, roughly in middle of raised ridge. REPEAT on the other side. See pictures below.



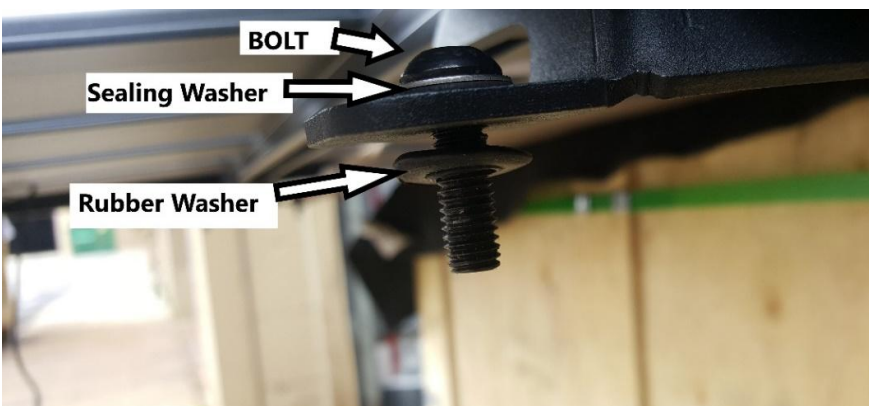
4. **Mark placement location for the front crossbar:**
Mark the front crossbar leg location at **913 mm** in front of the drill location you marked in the previous step, roughly in the middle of raised ridge. REPEAT on the other side. See pictures below.
5. Place the crossbars assemblies you prepared in step (A) on the Hardtop and align the rear-most mounting holes of the Legs with the drill locations you marked in the previous step B3 and B4. Make sure both legs sit evenly on the raised mounting surface. The holes should be roughly in the middle of the raised surface – refer to pictures below.
 - **Double check before you mark your final drill points – adjust the legs if needed.**
6. Using a pen/pencil, mark drill points on the Hardtop through leg holes as shown below – two (2) for each leg.
7. Remove the crossbars from the hardtop.
8. Drill pilot holes with a small drill bit and then drill **9 MM (3/8")** final mounting holes.
 - drill through headliners if you have, to use as reference for marking cutouts to clear the brackets later.
Do not drill deep to avoid drilling into interior components and trim panels.
9. Remove masking tape from the mounting surface and clean the surfaces for the final installation.





C- BOLT THE CROSSBARS TO THE HARDTOP

1. Insert legs Sealing Bolts (pre-assembled bolt + sealing washer) through the legs and add Rubber Isolators/Washers as shown below. Do it for all four (4) legs.
2. Now align and push leg bolts through the holes you drilled in the previous step.



D- INSTALL MAXIMUS-3 INTERNAL BRACKETS

1. **Unbolt the Hardtop:**
Remove two (2) bolts up in the front and six (6) bolts in the back securing the hardtop to the body.
2. **Remove the overhead Sound Bar:**
 - A- Unbolt the sound bar using a 10mm socket,
 - B- Disconnect the interior lights and speaker wiring connector, and remove the Sound Bar.



3. Disconnect the back windshield wiper wire harness and drain hose in the back.
4. With help from a second person lift the front of the Hardtop and place padded wooden spacers between as shown.
- This will give you more room to be able to install the front brackets.



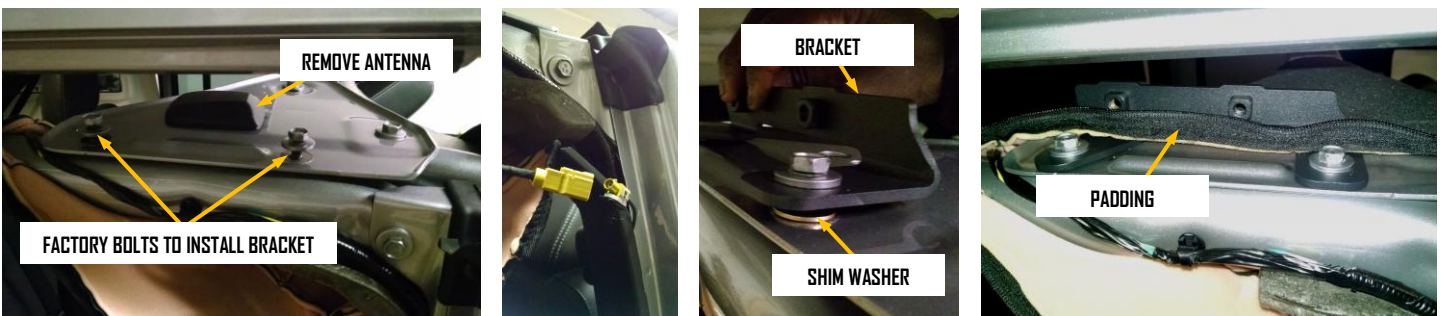
5. Unzip the roll bar padding to reveal factory brace brackets. Remove the bolts shown below and keep for install later.
6. On the roll cage front passenger side brace/gusset, remove the Satellite Antenna shown, disconnect wiring and save for relocation later.
7. Disassemble the Internal Brackets (Bearing Brackets) to prepare for assembly. Please note orientation of assembly.

8. Install the Front Brackets:

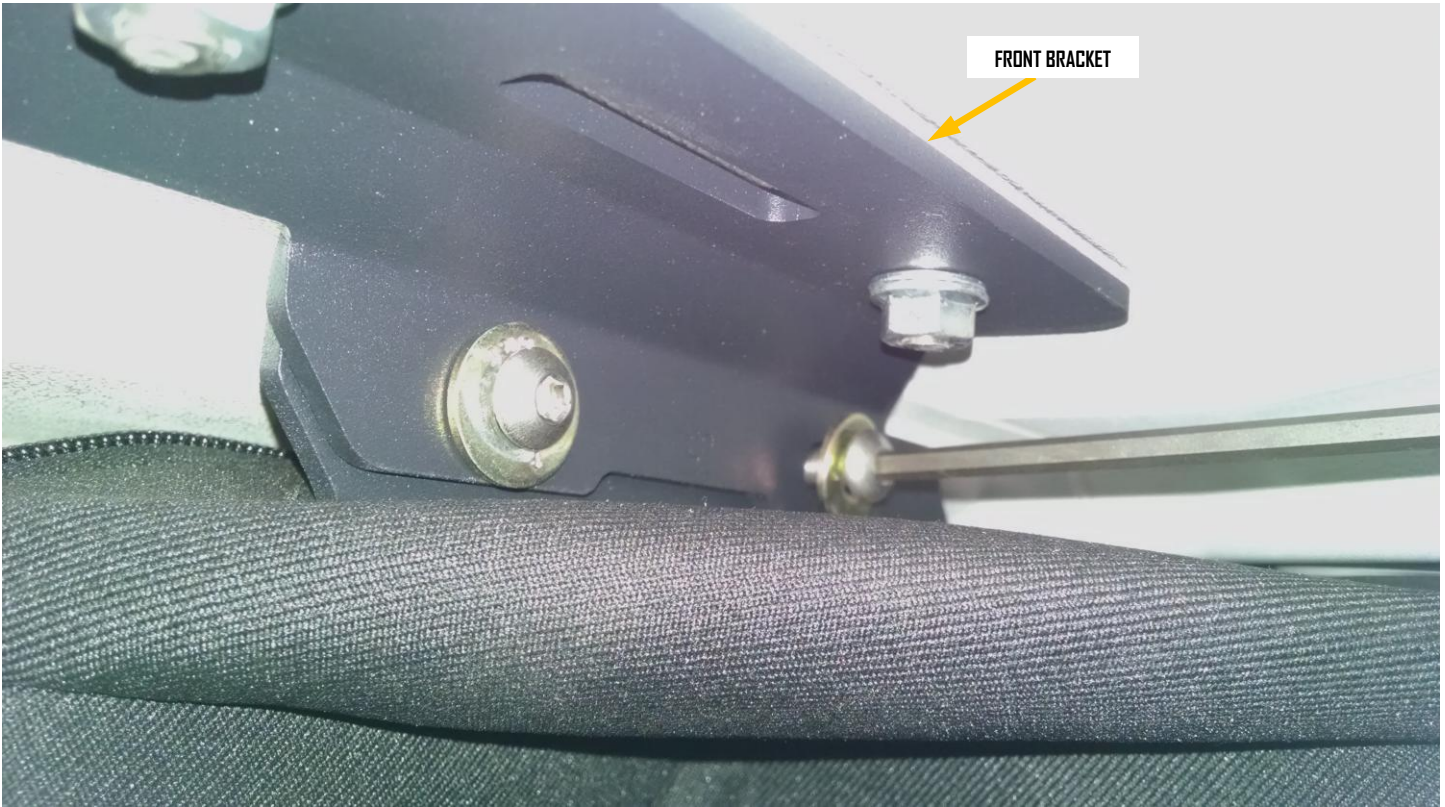
Place the front lower Bearing Brackets over roll cage brace gusset and align the holes, then mark bracket tabs position on the padding and cut clearance slits through the padding with a knife.

Repeat on the other side. See pictures below.

9. Now insert the brackets through the slits you cut in the pads, add the shim washers underneath the brackets and bolt to the roll cage gusset with factory bolts.
10. Repeat on the other side and tighten all bolts.



11. Remove the wooden spacers you put in in step (4) and carefully lower the Hardtop to its aligned position.
12. Re-install the Hardtop bolts you removed in step (1). There are two (2) bolts in the front and six (6) bolts in the back.
13. Align the Upper Internal Brackets to crossbar legs bolts you installed in step (C-2) from inside the Hardtop and secure in place with Flanged nuts supplied. **Torque to 8 ft.lb.**
- You can use a helping hand to hold the button head bolts from outside with an Allen key while you fasten the nuts.
14. Adjust/align to the lower brackets and tighten horizontal bolts.



15. Install the Rear Brackets:

Place the lower Rear Bracket over the roll cage brace gusset, cut slits in the padding and install the Brackets as shown using factory bolts.

Secure the upper bracket in place with Flanged nuts supplied. **Torque to 8 ft.lb.**

Note: horizontal bracket bolts are to be tightened last using 13mm socket/wrench.



16. Check and tighten all bolts and zip the Roll Cage paddings.



E- OPTIONAL: RELOCATE THE SATELITE RADIO ANTENNA

1. Carefully remove plastic trim from passenger side (RHS) B-pillar, floor and up the A-pillar.
2. Follow the factory antenna wiring you disconnected in step (D-6), detach from B-pillar and re-route up to the windshield frame area – loop and tape together any excess wire under the door sill.
3. Connect the antenna and reattach factory plastic trim panels.



4. Unzip passenger side front roll bar padding and mark antenna connector recess on the foam padding as shown.
5. Using a small pocketknife cut out a recess as shown below.
6. Place antenna in the recess and zip the padding to secure.





Your installation is complete. If you have questions regarding this installation, please contact us at customerservice@maximus-3.com, or call 248-6061745



WARNING



Limited Warranty

We offer **Limited Warranty** on products engineered and manufactured by **MAXIMUS-3**.

Our **Warranty** covers all workmanship, material and paint/finish defects for a period of 1 year (12 months) from the time of initial

All Maximus-3 aftermarket products and components must be installed as the manufacturer instructs. Maximus-3, LLC will not be responsible for any modification, improper installation, alteration, tampering, neglect, abuse or misuse of our products. Only use Maximus-3 installation guide to add, alter, or fabricate factory parts to incorporate Maximus-3 products. We will be happy to answer any questions concerning the design, function, and correct use of our products by calling 248-821-6654. It is ultimately the user's responsibility to have all fasteners properly retorqued after the first 100 miles and then every 3,000 miles thereafter. Tire carrier must be inspected for looseness every 1,000 miles. Using your vehicle off-road will put extreme stress on the vehicle and components. After driving off-road, always check for damage and wear to components, accessories, and equipment. Completely inspect your vehicle including wheels, tires, tire carrier, roof rack, and front set up. Check all threaded fasteners for looseness. Re-torque if necessary to the required specifications. Check and remove any accumulated dirt, mud rock, or debris to preserve powder coat finish/rust prevention.

purchase. **MAXIMUS-3** provides detailed installation instructions for every product. It is the responsibility of the purchaser / installer to ensure these instructions are followed properly. **MAXIMUS-3** will not be responsible for damages caused by misuse, altered or improperly installed products. **MAXIMUS-3** will not cover paint or labor costs for damaged items. Warranty is not transferable and covers all items ordered on or after December 1, 2012 with a valid original receipt.

Warranty covers all components manufactured by **MAXIMUS-3** unless otherwise specified on individual product listings.

3 Year Manufacturer Warranty

Maximus-3 products are warranted to be free from structural defects. All metallic components will carry 3-year manufacturer structural warranty. All warranty claims shall be issued in replacement of the original part or in-store credit. No refunds will be issued in cash, check or credit card payments.

ANY PACKAGES BEING SENT/RETURNED TO MAXIMUS-3 WITHOUT RETURN MERCHANDISE AUTHORIZATION (RMA) NUMBERS WILL BE REFUSED AND RETURNED TO SENDER.

RETURN POLICY

(Procedures for Returning or Exchanging Product)

PRODUCT MUST BE RETURNED TO THE ORIGINAL PLACE OF PURCHASE – Please refer to your original invoice.

Returns and Exchanges

At **MAXIMUS-3** we strive to get your order to you complete, undamaged and 100% correct. Your satisfaction is guaranteed. Products can be returned within 15 days of shipment as long as they are unused, uninstalled, unpainted and in new and saleable condition. Returned products need to be in their original packaging with all parts and instructions included. All returns of non-defective, non-damaged or special-order parts are subject to a 15% restocking fee, unless we made an error.

All returns require a "Return Merchandise Authorization" (RMA) number from **MAXIMUS-3** or one of our Distributors.

Whether we have made an error, you wish to exchange something, or there is a warranty claim, an RMA number is required. This number must be written on the outside of the returned package. Please allow five (5) business days for refunds to appear on your credit card statement. **No returns will be accepted on modified, "Custom" or "Special Order" items.** Item(s) must be received within 30 days of the RMA issue date; otherwise the Return Merchandise Authorization will be voided.

Damaged Merchandise

Upon receiving your order, open the carton(s) and thoroughly inspect the contents. If any package arrives and shows signs of external damage, you may choose not to accept it. You may refuse it and require your seller to advise you of their procedure to follow. If there was damage during shipment, contact us so that a claim can be filed. Please keep all packaging materials should the carrier wish to inspect them.

Truck Freight Shipments

It is imperative to make a note of any damage on the delivery receipt at the time of delivery. **Open and inspect** the merchandise carefully **before** signing the delivery receipt. We can only initiate claims if the damage was noted at the time of delivery. Freight costs are all based on shipments to commercial addresses (with a dock), if you require shipment to a residential address, additional charges may be applied to the order total.

Products

Product specifications, availability and pricing are all subject to change without notice. National, State, Provincial or local laws and regulations may prohibit the removal or modification of stock vehicle components, or the addition of some of our products for on road use. It is the responsibility of the purchaser to ensure that the use of purchase products follows all laws and regulations.