

MAXIMUS-3



JK/JKU WRANGLER

FRONT RECOVERY/TOW LOOPS

PART #: JK1005TL, JK1006TL, JK1005TB, JK1006TB, JK1005TT, JK1005TR

INSTALLATION STEPS

Estimated Install Time: 3 Hours

PLEASE MAKE SURE YOU READ AND UNDERSTAND THE ENTIRE INSTALLATION GUIDE BEFORE YOU START. WE EXPECT YOU TO HAVE BASIC MECHANICAL ABILITIES TO PERFORM THIS INSTALLATION.

WE RECOMMEND THAT YOU SEPARATE AND IDENTIFY ALL THE PARTS AND HARDWARE KITS YOU RECEIVED WITH YOUR SHIPMENT BEFORE YOU PROCEED.



IMPORTANT

Follow these instructions precisely. Maximus-3 is not liable for any damage caused by improperly installed products. It is the purchaser's responsibility to ensure both the installation and maintenance are performed properly as set forth in this guide. We recommend using anti-seize paste on all non-thread lock bolts.

THE MAXIMUS-3 RECOVERY/TOW LOOPS ARE FOR RECOVERY ONLY IF CONNECTED TO ANY DEVICE WITHOUT THE MAXIMUS-3 TOWING TIE ROD. YOU MUST USE 3/4 D-RING SHAKKLES WITH 7/8 PINS TO CONNECT THE VEHICLE FOR RECOVERY.

IF YOU ARE FLAT TOWING YOUR JEEP BEHIND A MOTORHOME/RV, ETC, YOU MUST USE THE MAXIMUS-3 TOWING TIE ROD (PN# JL1020TR) ACROSS YOUR TOW BAR. THIS IS A SAFETY REQUIREMENT FOR ANYONE WHO FLAT TOWS THEIR JEEP WITH THE MAXIMUS-3 RECOVERY/TOW LOOPS. THIS IS THE SAFEST WAY TO FLAT TOW YOUR JEEP TO AVOID PREMATURE FAILURE OF THE PRODUCT AND DAMAGE TO YOUR JEEP IN THE EVENT OF A TOWING BRAKE SYSTEM (SURGE BRAKE SYSTEM) MALFUNCTION OR FAILURE.

Parts List:

	<u>Qty</u>
Recovery/Tow Loops LHS	1
Recovery/Tow Loops RHS	1

Hardware List

M12 x 40 Hex Bolts - Zinc	4
M12 Flag Nut	2
M12 Serrated Flanged Nut	2
M12 Flat Washers - Zinc	4



Tools Required:

- ✓ Your Basic Hand tools
- ✓ Metric Sockets/wrenches
- ✓ Driller and Drill Bits
- ✓ Metal Hole-Saw Diameter 1.25" (31.75MM)
(available from local hardware stores)
- ✓ Cut-off Wheel (Grinder)

INSTALLATION STEPS

1- REMOVE THE SKID PLATE.

- Using a 15 MM drive socket and ratchet remove the skid plate – there are seven (7) bolts to remove, 5 in front and 2 in the back.
- Remove the skid plate and place it on a protective surface to avoid surface damage.

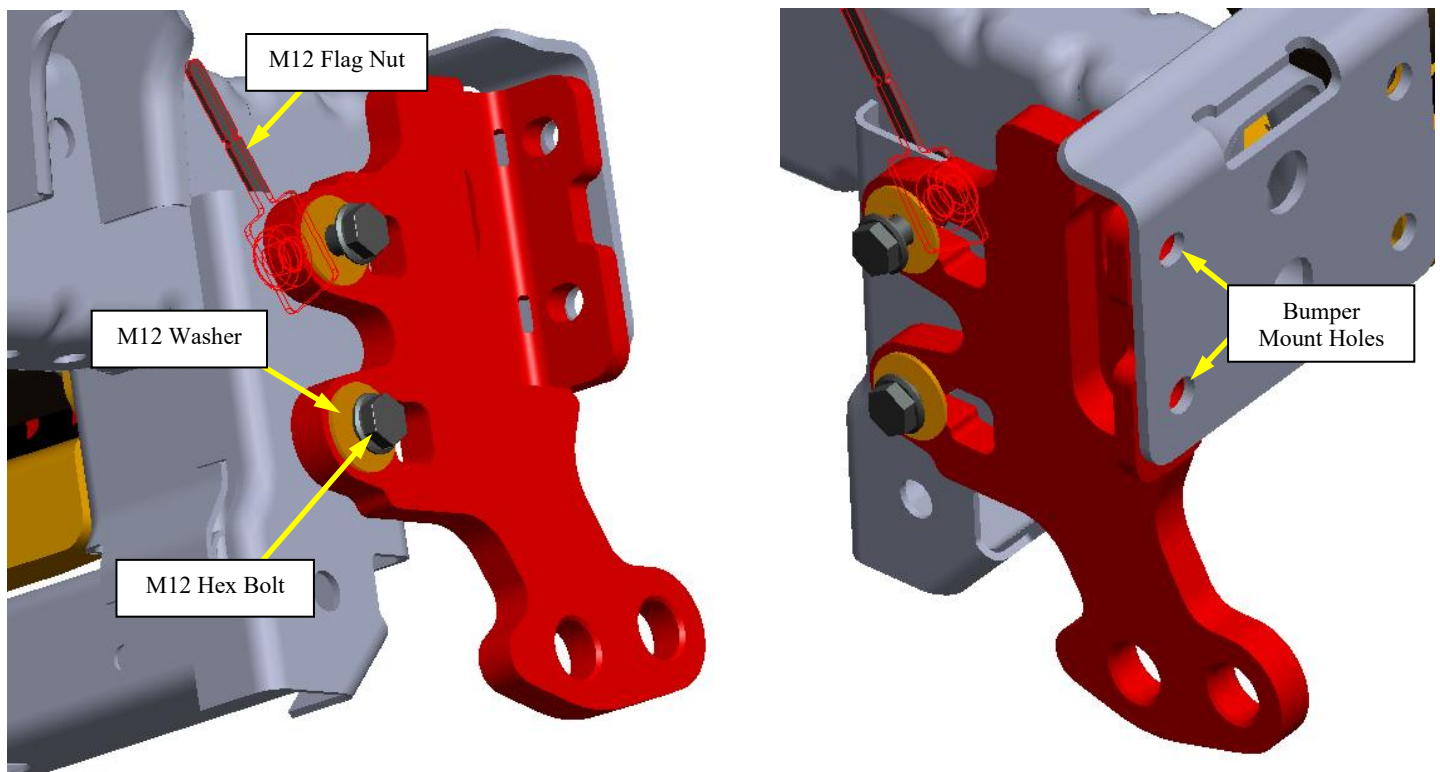


2- REMOVE THE FRONT BUMPER.

- A. Reach under the bumper and disconnect the fog lights wire connectors, both RHS & LHS.
- B. Using 18 MM drive socket, short extension and ratchet remove the 8 bumper flange nuts – there are four (4) bolts holding the bumper on each side.
- C. Carefully remove the bumper and place it on a protective surface.

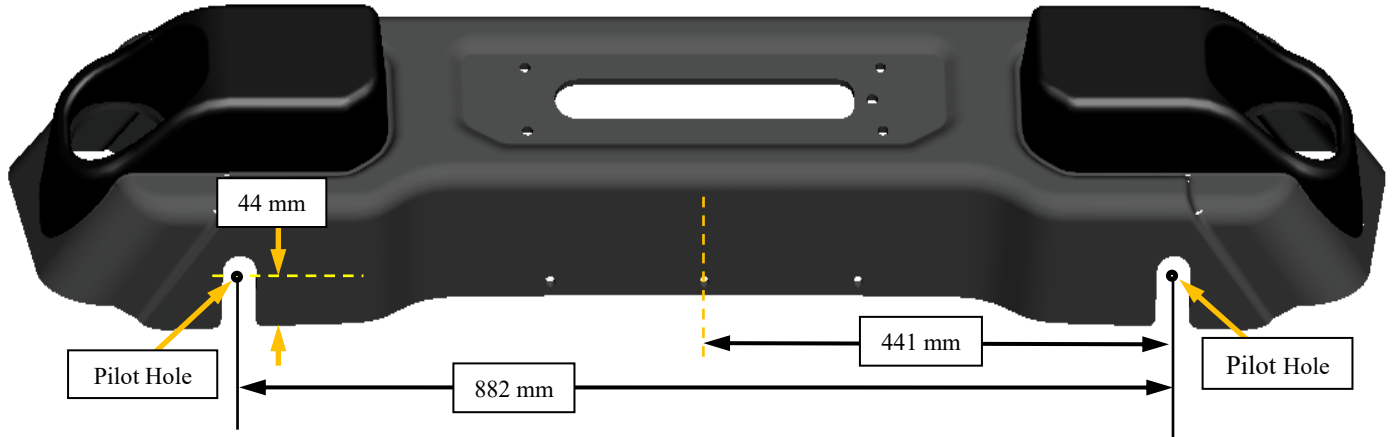
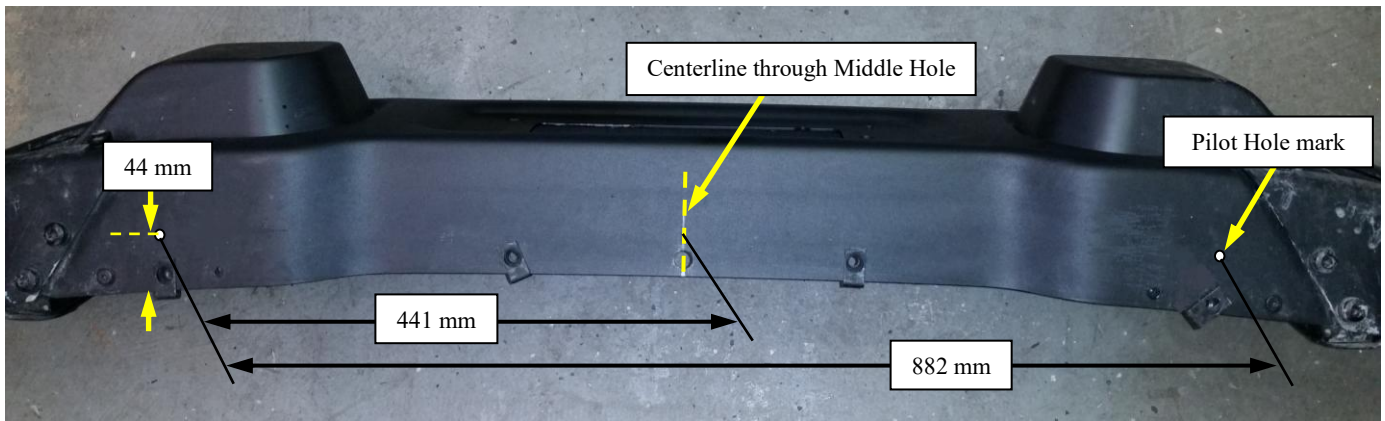
3- INSTALL YOUR MAXIMUS-3 TOW LOOPS:

- A. Place your Tow Loop over mounting holes in the chassis frame and align to bumper mounting points as shown below.
- B. Now secure the back end using M12 hex bolts, washers, flag nut (top) and flanged nuts (bottom).
- Make sure front holes are lining up with corresponding bumper mounting holes. Repeat the same on the other side and tighten all bolts. Torque to 80 Ft.Lb.

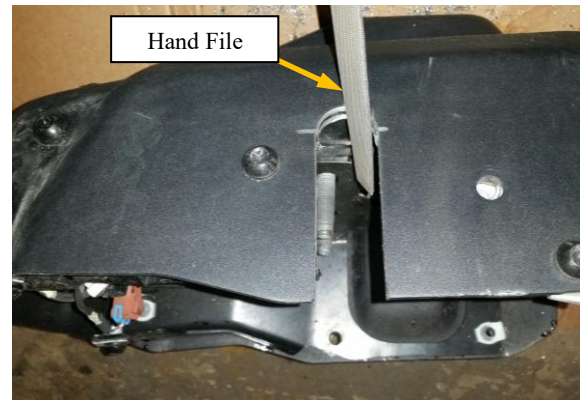
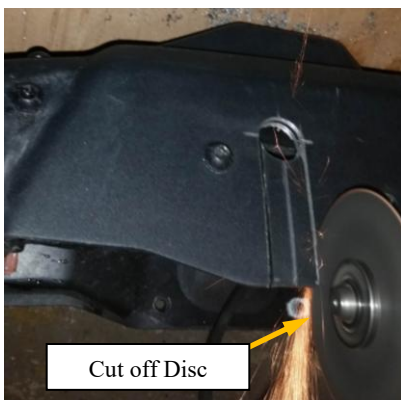
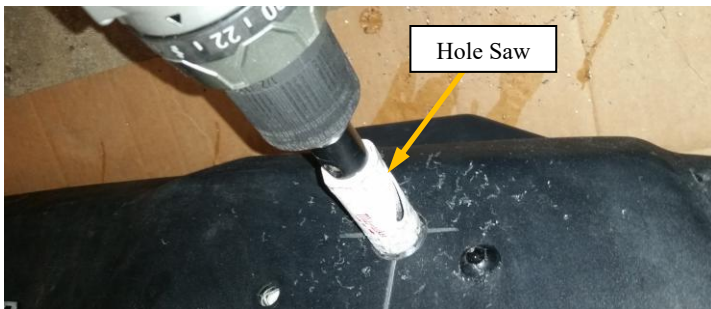


4- CUT CLEARANCE SLOTS IN THE BOTTOM SIDE OF THE BUMPER.

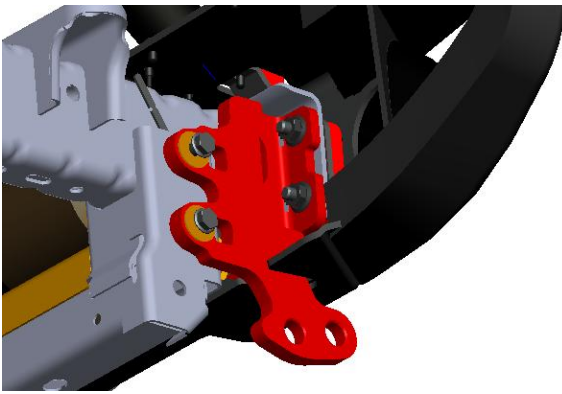
- A. Mark the center line on the bottom side of the bumper (through the middle hole).
- B. Mark a line **441 MM** from the center line on each side (**882 MM** overall left to right).
- C. Mark a drill point on the line **44 MM** (1.75") from the edge of the bumper as shown below.
- D. Using a small drill bit to drill a pilot hole.
- E. Using a 1.25" hole-saw drill out a radius hole.
- F. Mark lines tangent to the holes you drilled out.
- G. Using a cut off wheel/grinder cut along the lines you marked to the tangents of the radius holes you drilled in the previous step to create a slot.
- H. De-burr your cut edges using a hand file and touch up with protective paint to prevent rusting.



EXAMPLE OF HOW TO CUT CLEARANCE SLOTS. PICTURES MAY NOT LOOK LIKE YOUR BUMPER.

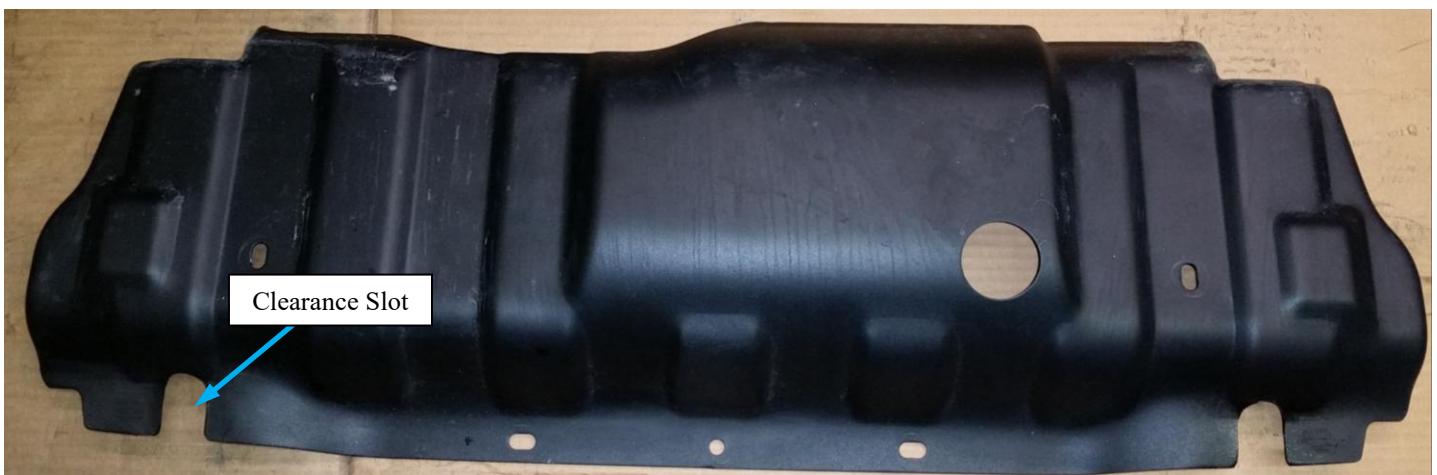
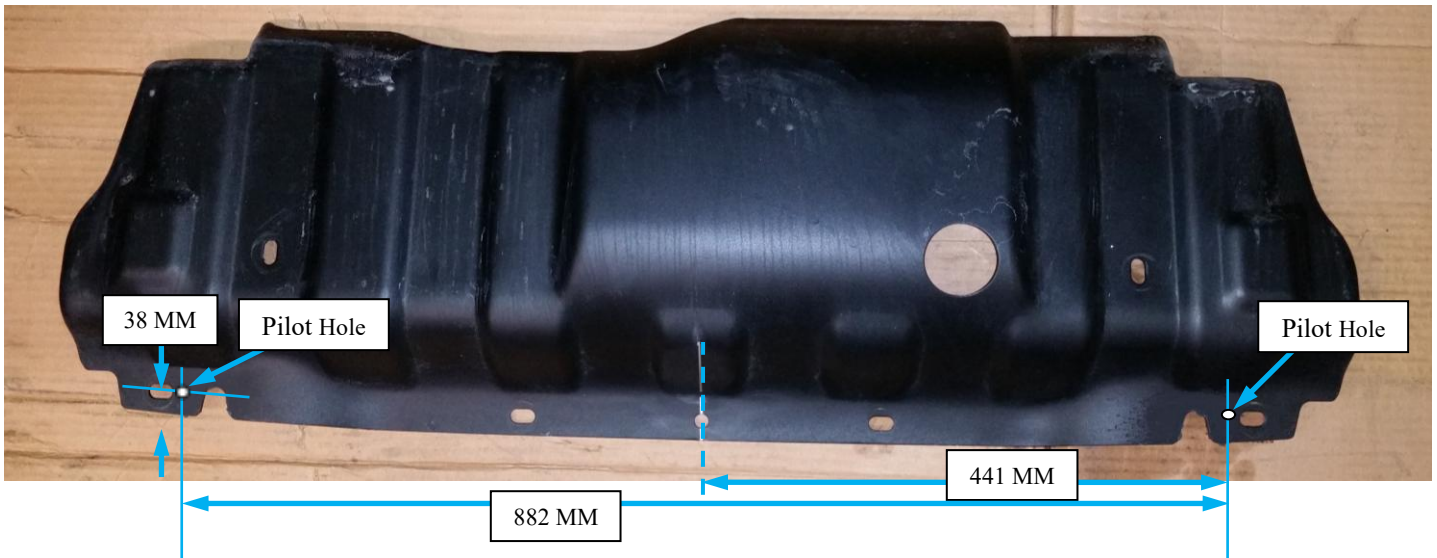


- I. Reassemble the bumper: carefully slide bumper studs through the mounting holes in the chassis frame horns and through the Tow Loops.
- J. Thread on all eight (8) bumper nuts and tighten. Torque all eight (8) to 60 Ft.Lb.



5- CUT CLEARANCE SLOTS IN THE SKID PLATE.

- A. Mark the center line on the front lip of the skid plate (through the middle hole).
- B. Mark a line **441 MM** from the center line on each side.
- C. Mark a drill point on the line **38 MM** (1.5") from the edge of the skid plate as shown below.
- D. Using a small drill bit, drill a pilot hole.
- E. Using a **1.25"** hole-saw drill out a radius hole.
- F. Mark lines tangent to the holes you drilled out.
- G. Using a cut off wheel/grinder cut along the lines you marked to the tangents of the radius holes you drilled in the previous step to create a slot.
- H. De-burr your cut edges with a hand file and touch up with protective paint to prevent rusting.



6- RE-ASSEMBLE THE SKID PLATE.

A. Re-assemble the skid plate using factory hardware. Make sure the Tow Loops clear well through the slot.

Your installation is complete. If you have questions regarding this installation, please contact us at customerservice@maximus-3.com, or call 248-6061745