

# MAXIMUS-3



JL WRANGLER / JT GLADIATOR

## FRONT RECOVERY/TOW LOOPS

PART #: JL1025TL, JL1026TL, JL1029TL, JL1025TT, JL1026TT, JL1029TT,  
JL1025TB, JL1026TB, JL1029TB, JL1025TR, JL1026TR, JL1029TR

## INSTALLATION STEPS

Estimated Install Time: 4 Hours

PLEASE MAKE SURE YOU READ AND UNDERSTAND THE ENTIRE INSTALLATION GUIDE BEFORE YOU START. WE EXPECT YOU TO HAVE BASIC MECHANICAL ABILITIES TO PERFORM THIS INSTALLATION.

WE RECOMMEND THAT YOU SEPARATE AND IDENTIFY ALL THE PARTS AND HARDWARE KITS YOU RECEIVED WITH YOUR SHIPMENT BEFORE YOU PROCEED.



## IMPORTANT

Follow these instructions precisely. Maximus-3 is not liable for any damage caused by improperly installed products. It is the purchaser's responsibility to ensure both the installation and maintenance are performed properly as set forth in this guide. We recommend using anti-seize paste on all non-thread lock bolts.

---

## IMPORTANT NOTICE

THE MAXIMUS-3 RECOVERY/TOW LOOPS ARE FOR RECOVERY ONLY IF CONNECTED TO ANY DEVICE WITHOUT THE MAXIMUS-3 TOWING TIE ROD. YOU MUST USE ¾ D-RING SHAKKLES WITH 7/8 PINS TO CONNECT THE VEHICLE FOR RECOVERY.

IF YOU ARE FLAT TOWING YOUR JEEP BEHIND A MOTORHOME/RV, ETC, YOU MUST USE THE MAXIMUS-3 TOWING TIE ROD (PN# JL1020TR) ACROSS YOUR TOW BAR. THIS IS A SAFETY REQUIREMENT FOR ANYONE WHO FLAT TOWS THEIR JEEP WITH THE MAXIMUS-3 RECOVERY/TOW LOOPS. THIS IS THE SAFEST WAY TO FLAT TOW YOUR JEEP TO AVOID PREMATURE FAILURE OF THE PRODUCT AND DAMAGE TO YOUR JEEP IN THE EVENT OF A TOWING BRAKE SYSTEM (SURGE BRAKE SYSTEM) MALFUNCTION OR FAILURE.

---

### Parts List:

	Qty
Recovery/Tow Loop LHS	1
Recovery/Tow Loop RHS	1
Spacer/Shim Plates	2

### Hardware List:

M12 x 40 Hex Bolts	6
M12 Flat Washers	6
M12 Flag Nuts (Nut Keys)	4
M10 x 40 Hex Bolts	2
M10 Flat Washers	2
M12 x 25 Temporary Bolts – Zinc	2
M12 Temporary Nuts – Zinc	2

### Tools Required:

- ✓ Your Basic Hand tools
- ✓ Metric Sockets/wrenches (16, 18,19)
- ✓ Driller and Drill Bits
- ✓ Metal Hole-Saw Diameter 1.5" (38 MM)
- ✓ Grinder and Cut off Wheel  
(available from local hardware stores)
- ✓ Cut-off Wheel (Grinder)



# INSTALLATION STEPS

1- REMOVE THE SKID PLATE USING 15 MM SOCKET/WRENCH.

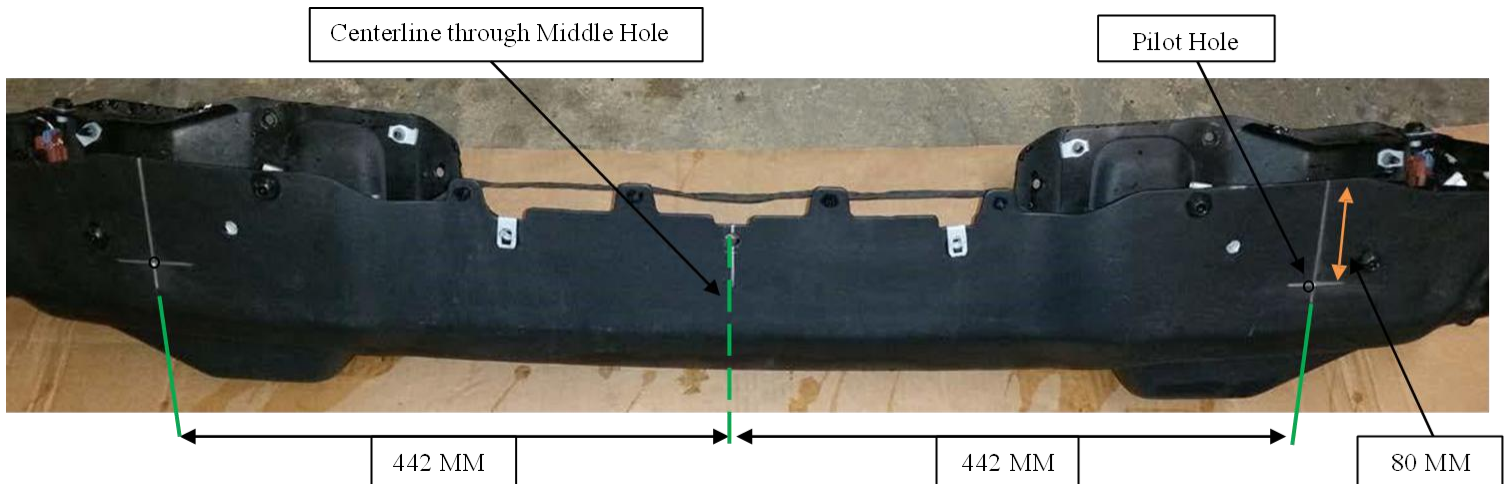
2- REMOVE THE FRONT BUMPER:

- A. Reach under the bumper on the passenger side and disconnect the fog light wire connector from the chassis frame.
- B. Using the 18 MM drive socket, short extension and ratchet, remove the eight (8) bumper flanged nuts – there are two (2) on the outside and two (2) on the inside from each side.
- C. Carefully slide the bumper assembly out and place it on a protective surface.

3- CUT CLEARANCE SLOTS IN THE BOTTOM LIP OF THE BUMPER:

- A. Mark the center line on the bottom side of the bumper (through the middle hole).
- B. Mark a line **442 MM** from the center line on each side.
- C. Mark a drill point on the line **80 MM** from the edge for steel bumpers and 45 MM for plastic, as shown below.
- D. Using a small drill bit, drill pilot holes.

## FACTORY STEEL BUMPER



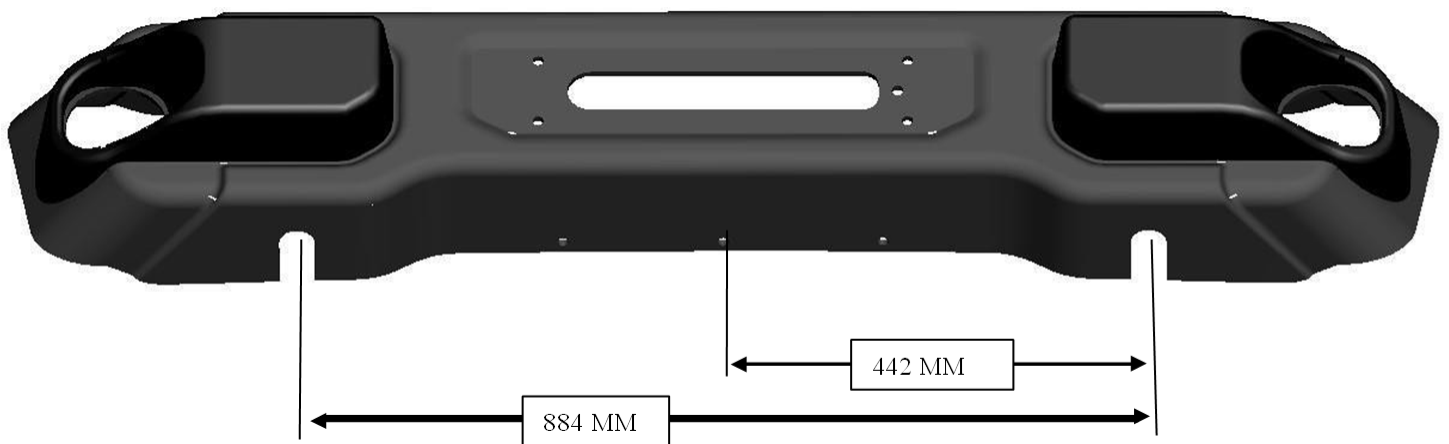
## FACTORY PLASTIC BUMPER



- E. Using a 1.5" hole-saw drill out a radius hole.
- F. Mark lines tangent to the holes you drilled out to cut out clearance slot as shown below.

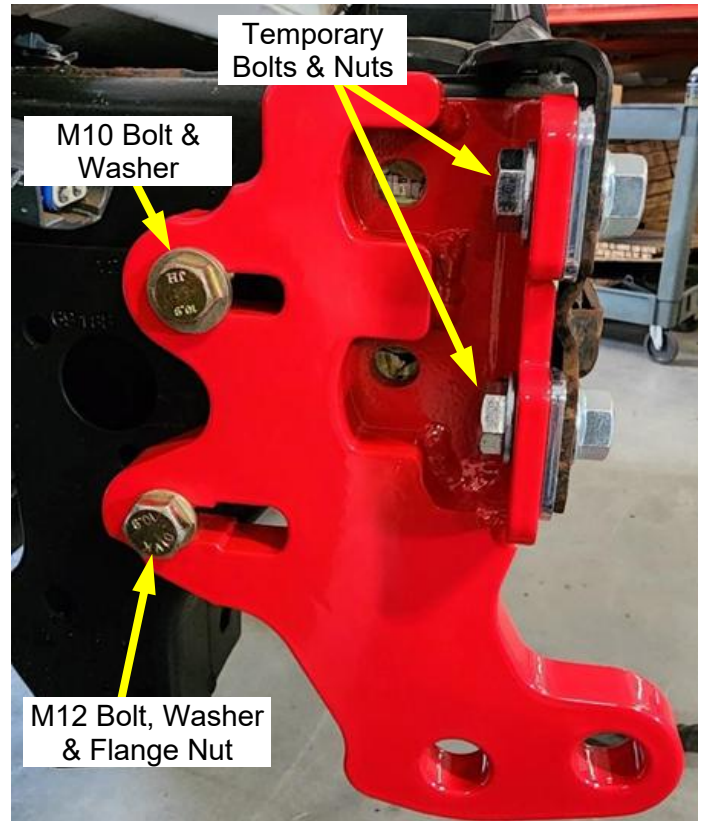
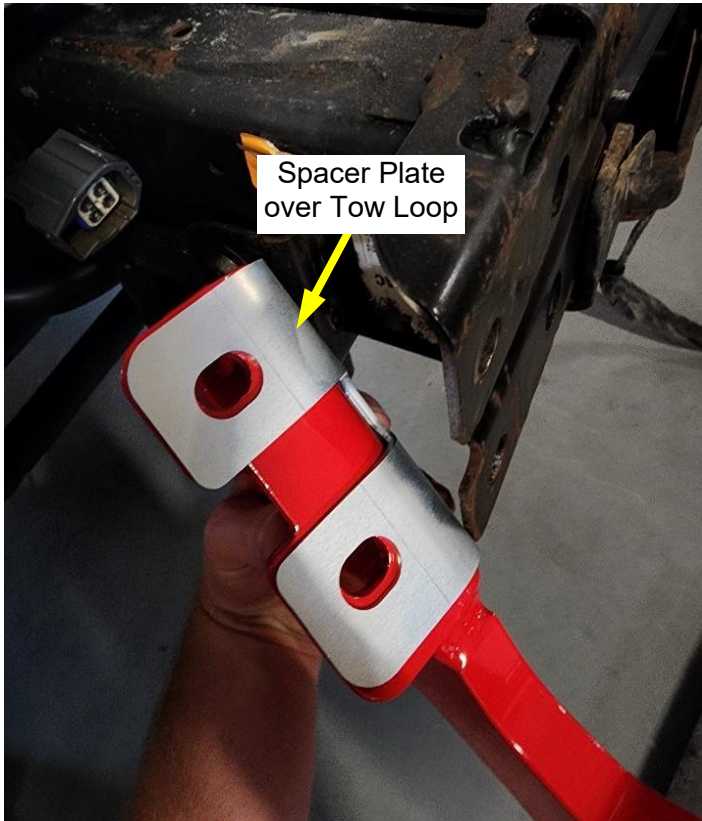


- G. Using a cut-off wheel/grinder, cut along the lines you marked to the tangents of the holes to create a slot.
- H. De-burr your cut edges and touch up with a protective paint to prevent rusting.
- I. Reassemble the bumper.

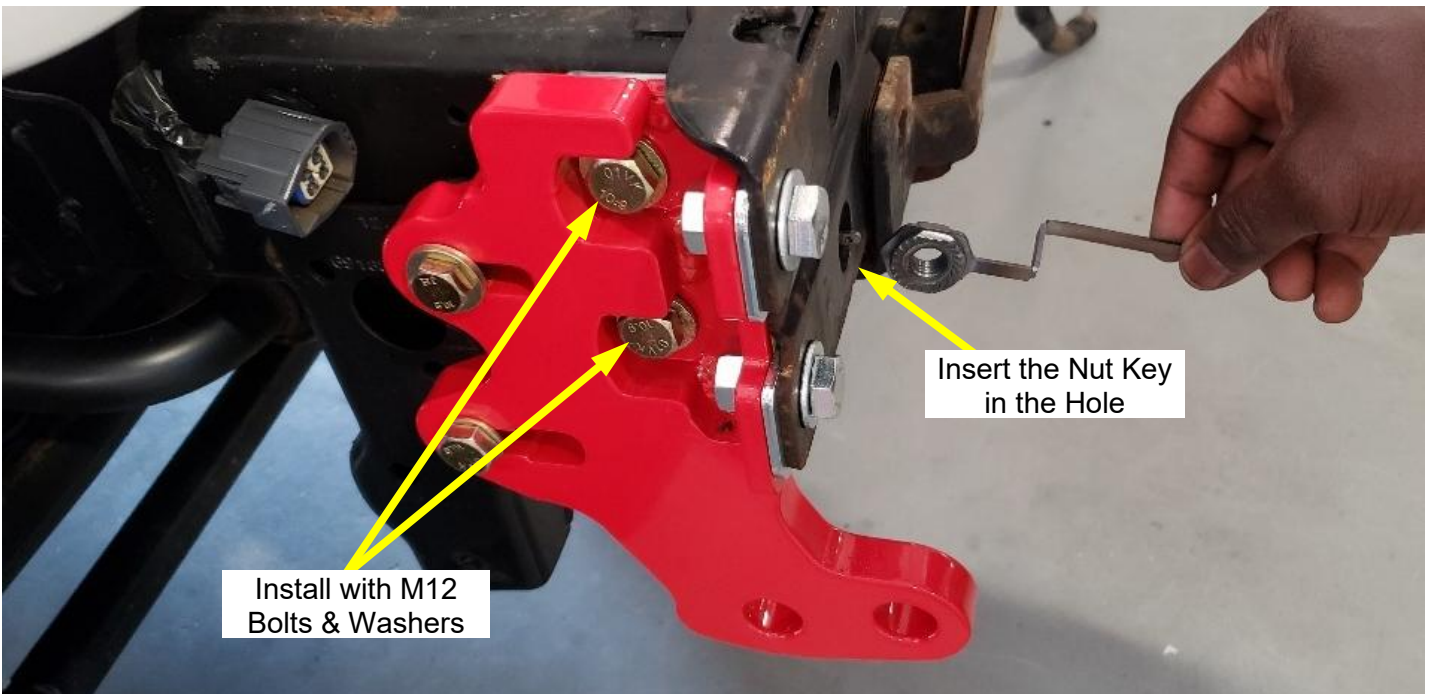
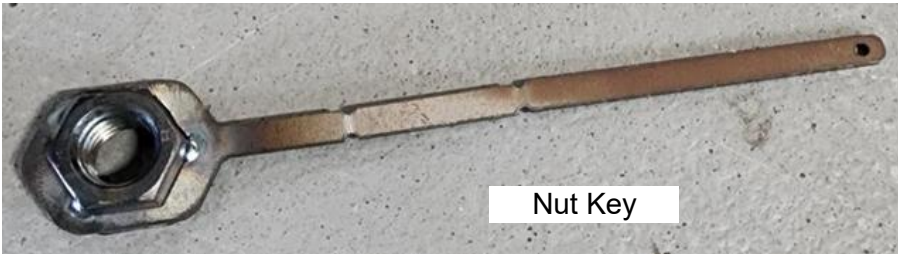
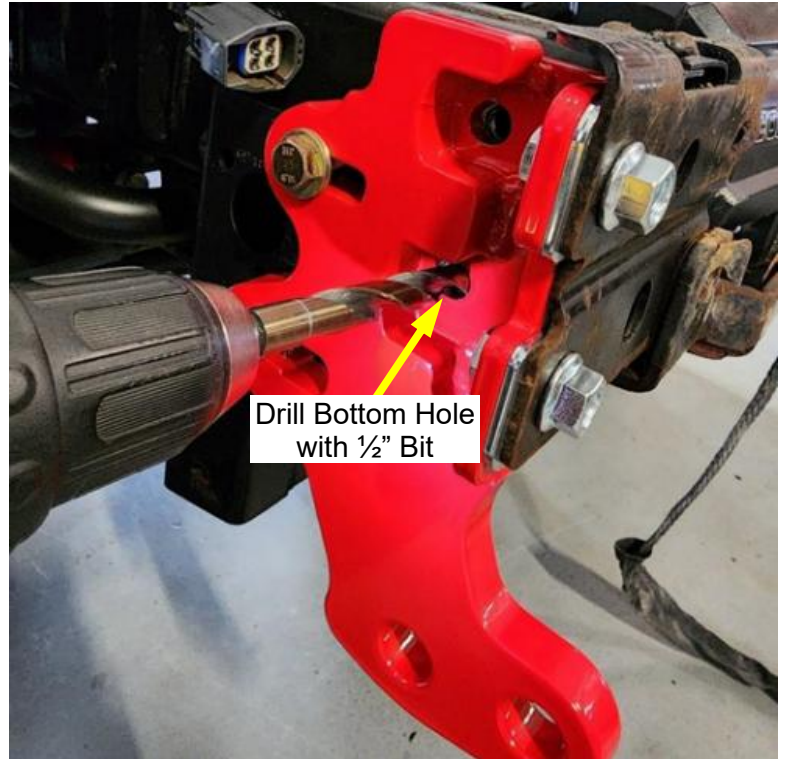
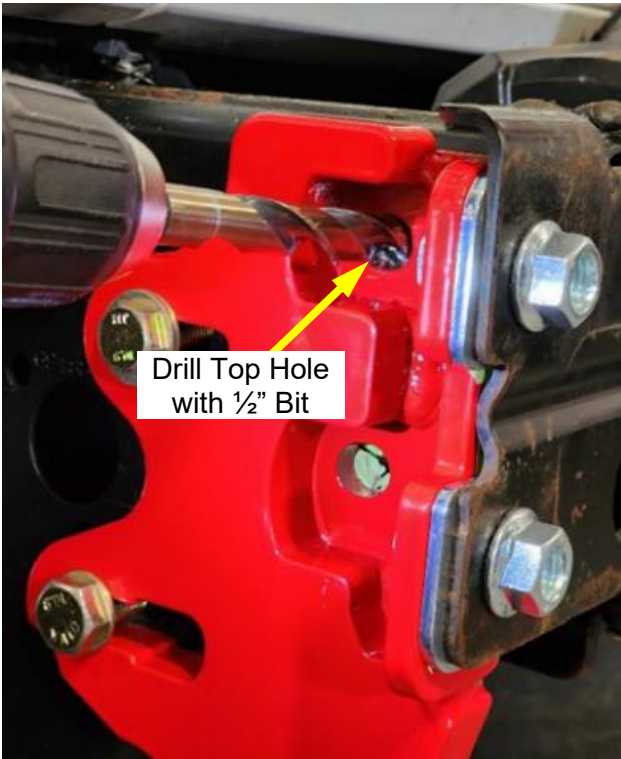


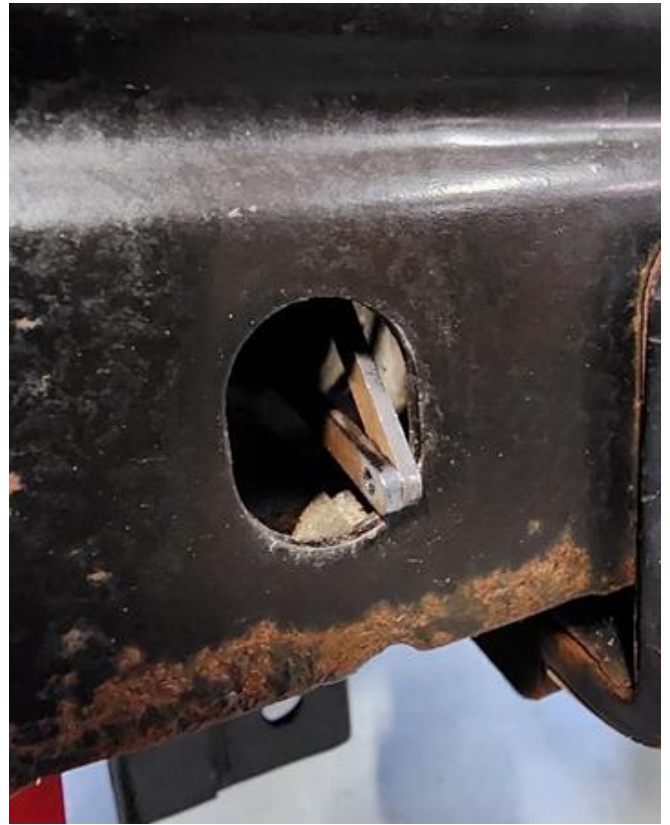
#### 4- INSTALL THE TOW LOOPS:

- A. Place the spacer plate over the Tow Loop and bolt in place with the temporary bolts through the frame-horn holes as shown below.
- B. Now bolt the rear of the Tow Loop to the frame using **M10 bolt and washer** (top) and **M12 bolt, washer and flanged nut** (bottom), and do not tighten hard for now.
- C. Align the Tow Loop and tighten the temporary bolts to pull the Tow Loop tight against the frame horn.



- D. Tighten the rear side M10 and M12 bolts.
- E. **Drill out two (2) new holes in the frame:**
  - 1- Using a drill and 1/2" drill bit, drill out two (2) new holes in the frame through the remaining holes in the Tow Loop as shown below.
  - 2- Touch up the inside of the new holes with any protective rust preventing paint you have available.
- F. Bend the nut keys into a "Z" shape to fit in the hole on the front of the frame-horn and install the M12 bolts. Refer to pictures below.
- G. Remove the temporary bolts and nuts and repeat the same on the other side.
  - Push the excess length of nut key handle into the frame/hole, or you can break it off at the necked area.





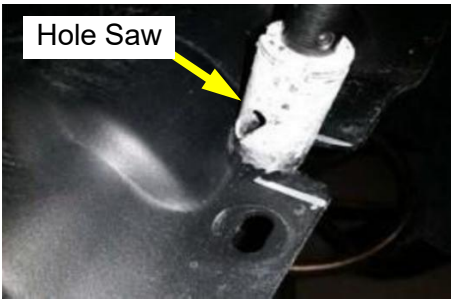
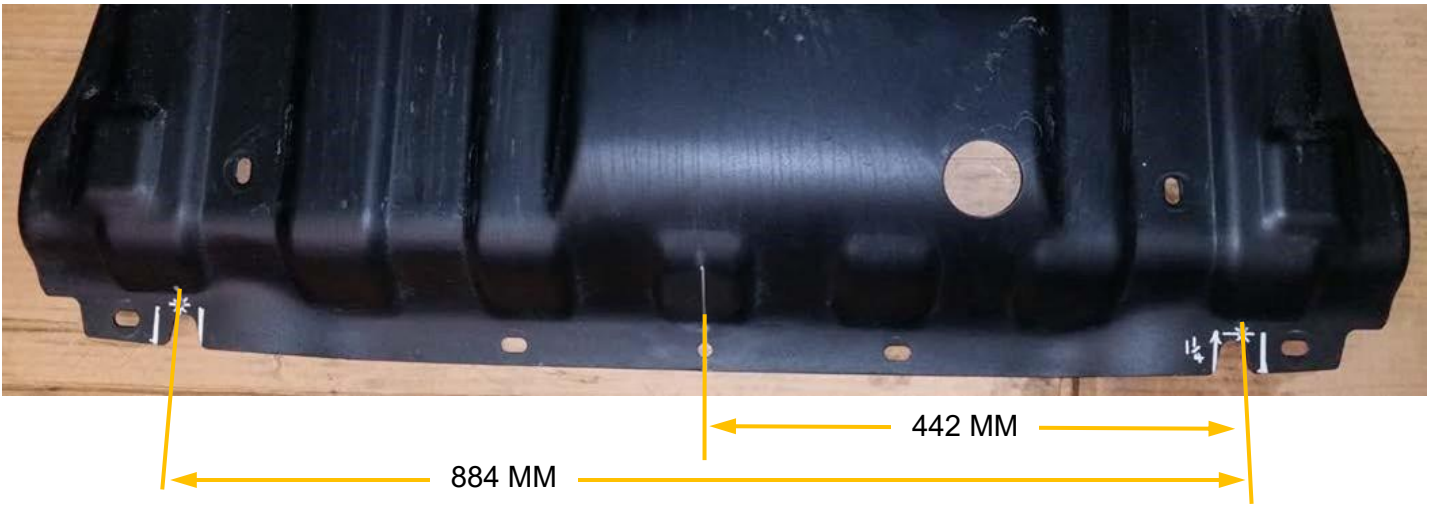
- H. Now tighten and torque all eight (8) bolts – four (4) on each side.
- Torque all six (6) **M12 bolts to 80 Ft.lb.** - three bolts on each side.
  - Torque all two (2) **M10 bolts to 38 Ft.lb.** - one bolt on each side.

#### **5- REINSTALL THE BUMPER:**

- A. Carefully slide bumper studs through the mounting holes in the chassis frame horns and through the Tow Loops.
- B. Thread on all eight (8) bumper nuts and tighten.
- Torque all eight (8) **M12 bolts to 60 Ft.Lb.**

#### **6- CUT CLEARANCE SLOTS IN THE SKID PLATE (Similar process to step 3):**

- A. Mark the center line on the lip of the skid plate (through the middle hole).
- B. Mark a line **442 MM** from the center line on each side.
- C. Mark a drill point on the line **32 MM** from the edge of the skid plate as shown below.
- D. Using a small drill bit, drill a pilot hole.
- E. Using a 1.5" hole-saw drill out a radius hole.
- F. Mark lines tangent to the holes you drilled out.
- G. Using a cut off wheel/grinder cut along the lines you marked to the tangents of the radius holes you drilled in the previous step to create a slot.
- H. De-burr your cut edges and touch up with a protective paint to prevent rusting.
- I. Re-assemble the skid plate. Make sure the Tow Loops clear well through the slot



Your installation is complete. If you have questions regarding this installation, please contact us at [sales@maximus-3.com](mailto:sales@maximus-3.com) or call 248-821-6654.