

MAXIMUS-3



JL/JLU WRANGLER

JL BACKUP CAMERA BRACKET

(Designed to fit Maximus-3 JL Tire Carrier & other brands with 5 x 5 lug patterns)

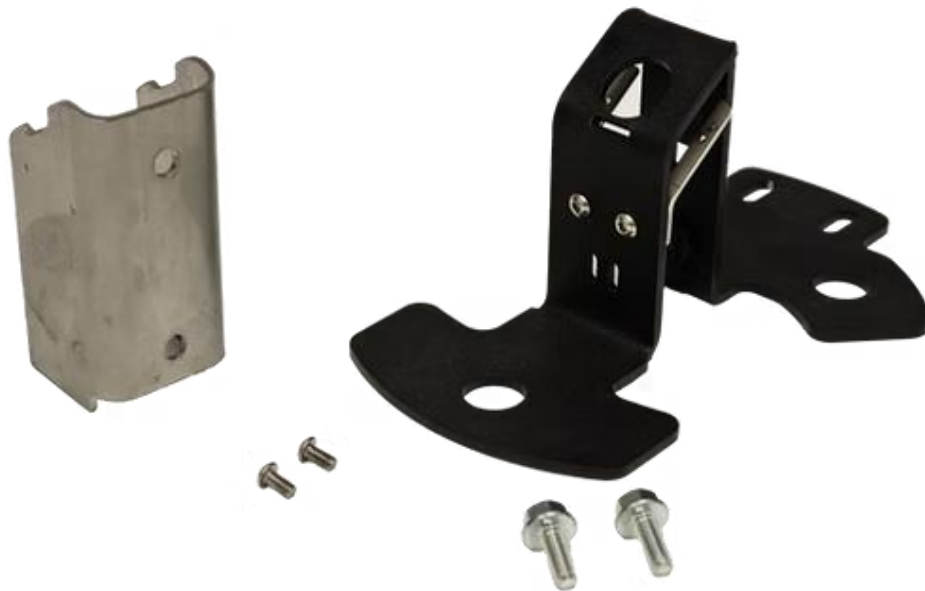
PART #: JL2001BC

INSTALLATION STEPS

Estimated Install Time: 1 hour

PLEASE MAKE SURE YOU READ AND UNDERSTAND THE ENTIRE INSTALLATION GUIDE BEFORE YOU START. WE EXPECT YOU TO HAVE BASIC MECHANICAL ABILITIES TO PERFORM THIS INSTALLATION.

WE RECOMMEND THAT YOU SEPARATE AND IDENTIFY ALL THE PARTS AND HARDWARE KITS YOU RECEIVED WITH YOUR SHIPMENT BEFORE YOU PROCEED.



IMPORTANT

Follow these instructions precisely. Maximus-3 is not liable for any damage caused by improperly installed products. It is the purchaser's responsibility to ensure both the installation and maintenance are performed properly as set forth in this guide. We recommend using anti-size paste on all non-thread-lock bolts.

Parts List:

Quantity

Tools Required:

Back-up Camera Bracket Assembly

1

✓ Metric Allen Keys Set

Hardware Kit

M3 Stainless Steel Screws

2

✓ Metric Torx Bits

M4 Stainless Steel Screws

2

✓ Your basic hand tools

M6 Hex Bolt

2

INSTALLATION STEPS

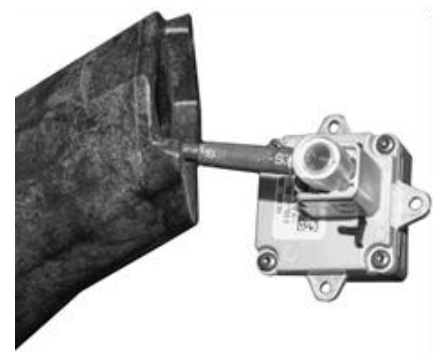
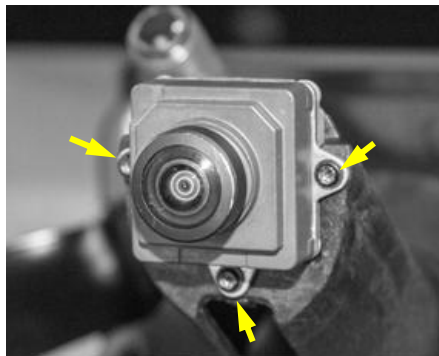
1. REMOVE SPARE TIRE FROM THE TIRE MOUNT.

2. REMOVE THE BACKUP CAMERA FROM FACTORY TIRE MOUNT:

Remove T25 Torx screws shown in the image below (qty. 2). Push the lug nut studs to remove the lug nut plate and backup camera mount from the factory tire mount.

Remove the backup camera from the lug nut plate by removing the T8 Torx screws as shown in the image below (qty. 3), then disconnect from the wiring by unplugging the connector on the back side of the camera. Note: Retain the hardware for reused.

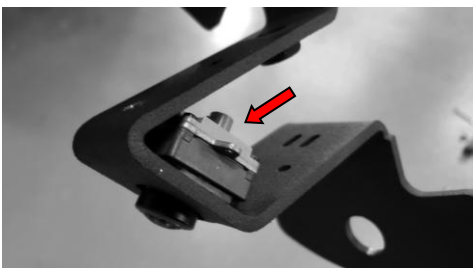
Remove the backup camera wire from the back side of the lug nut plate. Note: Do not damage this wiring harness or connector as it will be reused in this installation.



3. INSTALL THE BACKUP CAMERA:

PREASSEMBLE THE FACTORY CAMERA TO MAXIMUS-3 BRACKET:

Insert camera in the bracket and secure with clamp bracket using M4 stainless steel screws supplied – you can pull bracket slightly apart to make it easy to insert the camera in the hole, secure camera to the clamp bracket with sheet metal screw provided (qty. 1).



Feed the camera wire through the back of tire mount to the front.

Connect camera wire and then place the bracket assembly over the lug nuts and bolt down at the top with M6 hex bolts and washers supplied (qty. 2).

Now assemble the camera stainless steel shield/guard with M6 stainless steel bolts supplied. Note well: short bolt goes in front hole of bracket over the camera.

Reassemble the camera/light wire harness to the tailgate and reconnect the wires from inside.
Test your camera and make sure it is working before you move to next step.



4. INSTALL YOUR SPARE TIRE:

Your installation is complete. If you have questions regarding this installation, please contact us at customerservice@maximus-3.com, or call 248-6061745